

**Outbreak-Associated Cases of Varicella**  
Cases Reported January 1 through April 30, 2008



Investigation by:

Kansas Department of Health & Environment  
Office of Surveillance and Epidemiology  
1000 SW Jackson St., Suite 210  
Topeka, Kansas 66612  
[www.kdheks.gov](http://www.kdheks.gov)

In Kansas, all children enrolled in kindergarten through third grade are required to have either proof of vaccination or history of disease. In addition, individual cases of varicella became reportable to the Kansas Department of Health and Environment in 2003. In January 2008, the Office of Surveillance and Epidemiology (OSE) began collecting information on outbreaks of varicella. From January 1 to April 30, 452 cases of varicella were reported to OSE and 252 (55.7%) were outbreak related.

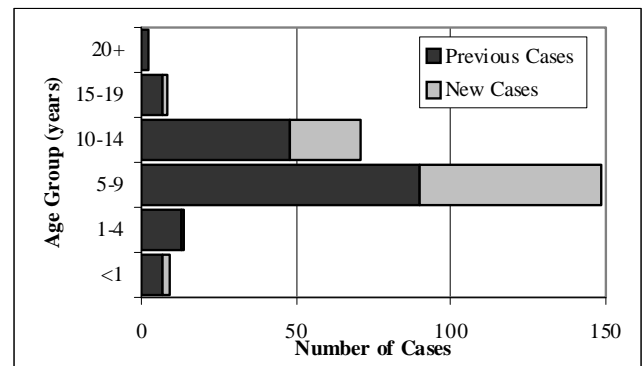
OSE identified 14 new outbreaks after March 3. A total of 39 outbreaks have been recognized among children (daycare through high school) in eleven different counties. Half of the outbreaks were located in four large urban counties. The number of cases associated with an outbreak ranged from 2 to 44 cases.

Gender among the outbreak-associated cases was evenly distributed (Table 1). The majority of the cases were white. Fifty-seven percent of all cases were 'Not Hispanic/Latino' but information was missing on 27% of the cases. Most of the cases were aged 5 to 9 years of age, with a range of 3 months to 36 years. Teachers were among the cases in two of the outbreaks.

### Demographics of Outbreak-associated Varicella Cases

	n=252
<b>Gender</b>	<b>%</b>
Male	46.0
Female	52.8
Unknown	1.2
<b>Race</b>	<b>%</b>
Asian	2.0
Black	4.0
White	86.5
Multiple race	1.9
Unknown	5.6
<b>Ethnicity</b>	<b>%</b>
Hispanic/Latino	15.5
Not Hispanic/Latino	57.1
Unknown	27.4
<b>Age</b>	
Mean	8.5 years
Range	3 months - 36 years

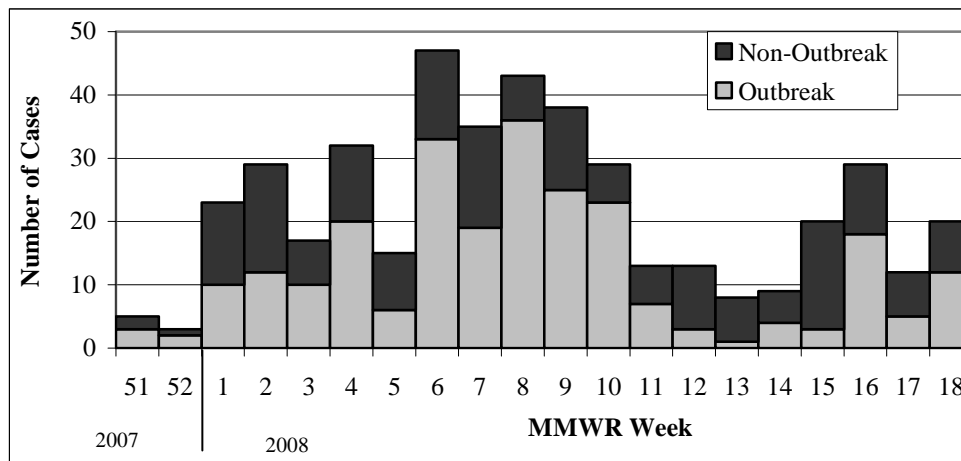
### Age Groups of Outbreak-associated Varicella Cases



New Cases – Cases identified after March 3

Previous Cases – Cases identified on/before March 3

### Epidemiologic Curve of Varicella Cases Based on Onset Date



## Varicella Outbreaks in School Settings, Reported January 1 through April 30, 2008

County	Onset date of 1st case	Onset date of most recent case	Total cases	Type of facility	Grades Involved													Unknown													
					Daycare	Preschool Pre-K	K	1	2	3	4	5	6	7	8	9	10		11	12											
Cowley	12/15/2007	1/5/2008	3	Grade School								2	1																		
Sedgwick	12/21/2007	1/24/2008	8	Grade School								4	4																		
Sedgwick	1/3/2008	2/18/2008	5	Grade School/Junior High						2		2					1														
Ford	1/4/2008	1/8/2008	4	Grade School																						4					
Cowley	1/5/2008	1/19/2008	6	Grade School				1	1	1	1	2	1																		
Cowley	1/5/2008	3/2/2008	10	Grade School						1	5	3															1				
Cowley	1/7/2008	2/6/2008	5	Grade School				1	1	1	1	2																			
Cowley	1/9/2008	1/22/2008	3	Grade School									2	1																	
Johnson	1/10/2008	2/8/2008	5	Grade School									5																		
Sedgwick	1/11/2008	3/9/2008	34	Grade School				4	3	12	8	4	1														2				
Morris	1/19/2008	1/23/2008	2	Pre-school		2																									
Cowley	1/20/2008	2/6/2008	3	Pre-school		3																									
Sedgwick	1/21/2008	1/21/2008	2	Grade School						3																					
Johnson	1/22/2008	2/11/2008	4	Junior High School													1			3											
Johnson	1/22/2008	4/18/2008	44	Grade School				10	5	17	8	4																			
Johnson	1/27/2008	2/14/2008	2	Pre-school		2																									
Barton	1/28/2008	1/29/2008	2	High School																									2		
Johnson	2/4/2008	3/6/2008	5	Grade School				1			1	1	1																1		
Sedgwick	2/9/2008	2/28/2008	14	Grade School/Junior High										10	1	2													1		
Johnson	2/9/2008	2/16/2008	2	Junior High School												2															
Johnson	2/9/2008	2/22/2008	2	Junior High School												1			1												
Harvey	2/12/2008	2/28/2008	19	Daycare	19																										
Johnson	2/13/2008	2/16/2008	2	Grade School			2																								
Barton	2/13/2008	2/28/2008	2	Pre-school		2																									
Johnson	2/16/2008	2/17/2008	2	Grade School			2																								
Sedgwick	2/16/2008	2/28/2008	3	Grade School			2	1																							
Meade	2/18/2008	3/3/2008	6	Grade School/Junior High				1	2			1		1																1	
Reno	2/19/2008	3/16/2008	9	Grade School						7																				2	
Johnson	3/13/2008	4/9/2008	2	Grade School							1	1																			
Johnson	3/23/2008	3/31/2008	2	Grade School							1		1																		
Douglas	4/2/2008	4/14/2008	2	Grade School							1	1																			
Wyandotte	4/2/2008	4/25/2008	4	Junior High School																										4	
Wyandotte	4/3/2008	4/14/2008	2	Grade School												6															
Douglas	4/7/2008	4/21/2008	2	Grade School								2																			
Douglas	4/12/2008	4/21/2008	3	Grade School									3																		
Wyandotte	4/19/2008	4/25/2008	2	Grade School								1		1																	
Sedgwick	4/20/2008		11	Grade School																										11	

Shaded grades (K-3) indicate those grades that require either history of vaccination or disease.

Shaded counties indicate new outbreaks since March 3, 2008