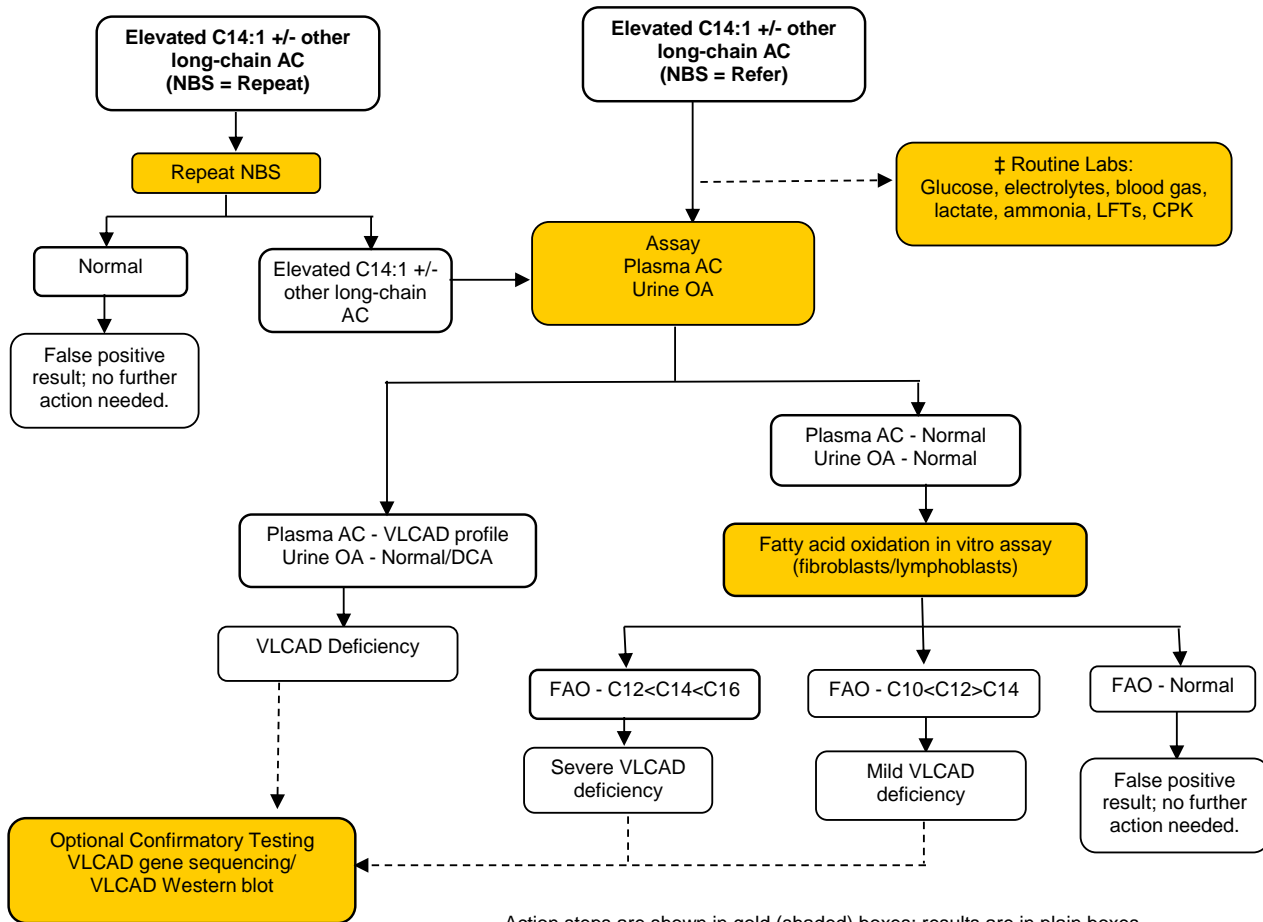


ELEVATED C14:1 +/- OTHER LONG CHAIN AC



Action steps are shown in gold (shaded) boxes; results are in plain boxes.
Dash lines indicate optional steps

Abbreviations

AC = acylcarnitine
 CPK = creatine phosphokinase
 DCA = dicarboxylic acid
 FAO - fatty acid oxidation
 LFTs = liver function tests
 NBS = Newborn Screening
 OA = organic acid
 VLCAD - very long-chain acyl-CoA dehydrogenase

Key

‡ When positive predictive value of screening is sufficiently high and the risk to the baby is high, some initiate diagnostic studies that are locally available at the same time as the confirmation of the screening result is done.

DISCLAIMER: These algorithms and guidelines were adapted from the American College of Medical Genetics algorithm sheets. They are designed primarily as an educational resource for physicians to help them provide quality medical services. Adherence to these standards and guidelines does not necessarily ensure a successful medical outcome. These standards and guidelines should not be considered inclusive of all proper procedures and tests or exclusive of other procedures and tests that are reasonable directed to obtaining the same results. In determining the propriety of any specific procedure or test, the healthcare provider should apply his or her own professional judgment to the specific clinical circumstances presented by the individual patient or specimen. It may be prudent, however, to document in the patient's record the rationale for any significant deviation from these standards and guidelines