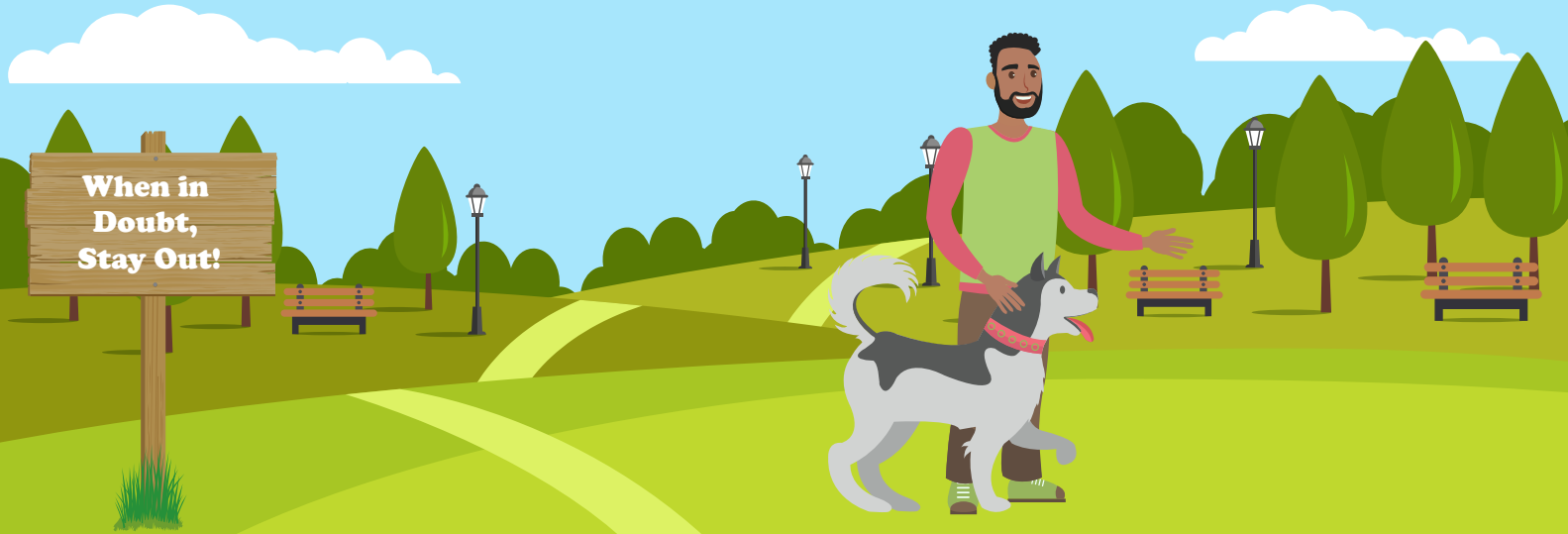


KEEP YOUR PETS SAFE

Before letting your furry friends jump into the lake this summer, check for an overgrowth of blue-green algae, known as a “harmful algal bloom.”



Water that is scummy or foamy or has a thick mat



Water that is green, blue-green, or brownish red



Water that looks like it has a paint spill on the surface

DID YOU KNOW?

- Blue-green algae can produce toxins which affect people, pets, and livestock.
- There have been several confirmed cases of dog deaths in Kansas due to algal toxins. When a Harmful Algal Bloom (HAB) is present or suspected, keep pets away from the water and from the shore where decaying algae may be visible.
- By drinking the water, eating dried algae, or licking algae from their fur or paws, dogs can quickly ingest enough toxin to cause illness or death within minutes.
- Horses and cattle are also very susceptible to toxins due to the quantity of water they consume, and they should not drink water from ponds or lakes with a HAB.
- Check advisories on the KDHE website before visiting a public lake, and know how to recognize HABs.
- **IF YOU THINK THAT YOUR ANIMAL HAS BEEN EXPOSED TO BLUE-GREEN ALGAE, CONSULT YOUR VETERINARIAN IMMEDIATELY.**

How to Keep Pets Safe:



Carry clean water for your dog when hunting or walking along the shoreline.



Don't let your dog retrieve waterfowl from a waterbody affected by HAB.



Move livestock to an alternate water source.

To check advisories or learn more, or to report a suspected bloom or case of animal or human illness, visit kdhe.ks.gov/HAB or call 855-422-5253.

