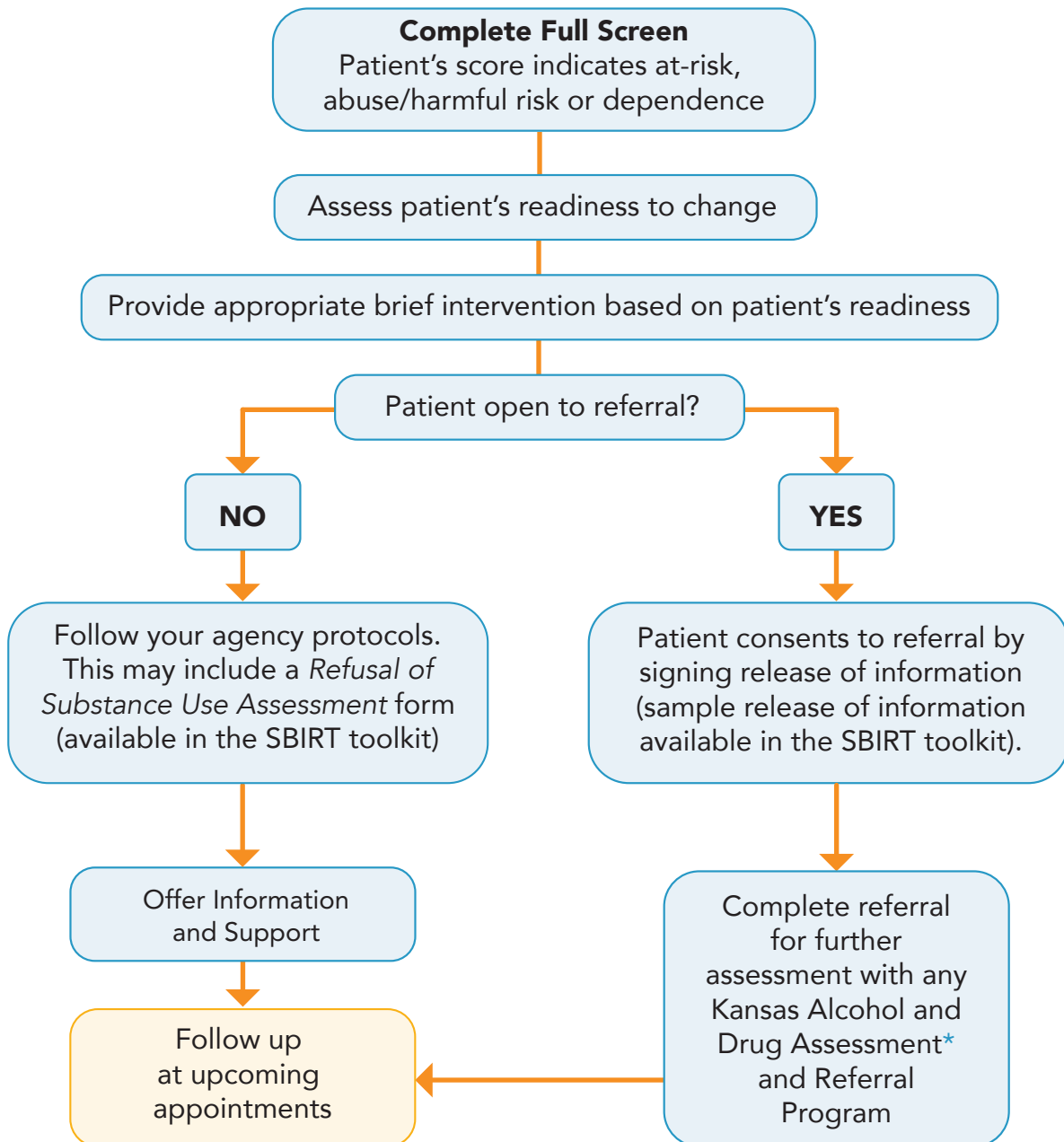


## NAVIGATING REFERRAL ACCESS POINTS

If at any point during this workflow the patient presents in crisis, please initiate procedures found on the crisis algorithm



- \* Assessment: The purpose of the assessment is for a Licensed Addictions Counselor to obtain information for problem identification and treatment services. Contact a local program ([bit.ly/KDADS\\_SUTreatmentServices](http://bit.ly/KDADS_SUTreatmentServices)) directly (option #1), or call Beacon Health Options at **1-866-645-8216** (option #2)
- Patients should be made aware of State reporting requirements associated with substance use and the perinatal period. For more information go to: [www.dcf.ks.gov/services/pps/documents/guidetoreportingabuseandneglect.pdf](http://www.dcf.ks.gov/services/pps/documents/guidetoreportingabuseandneglect.pdf)
- Confidentiality related to substance use disorders and treatment are protected under **42 CFR Part 2**. To ensure compliance when referring patients, use a federally compliant release of information form (available in SBIRT toolkit).