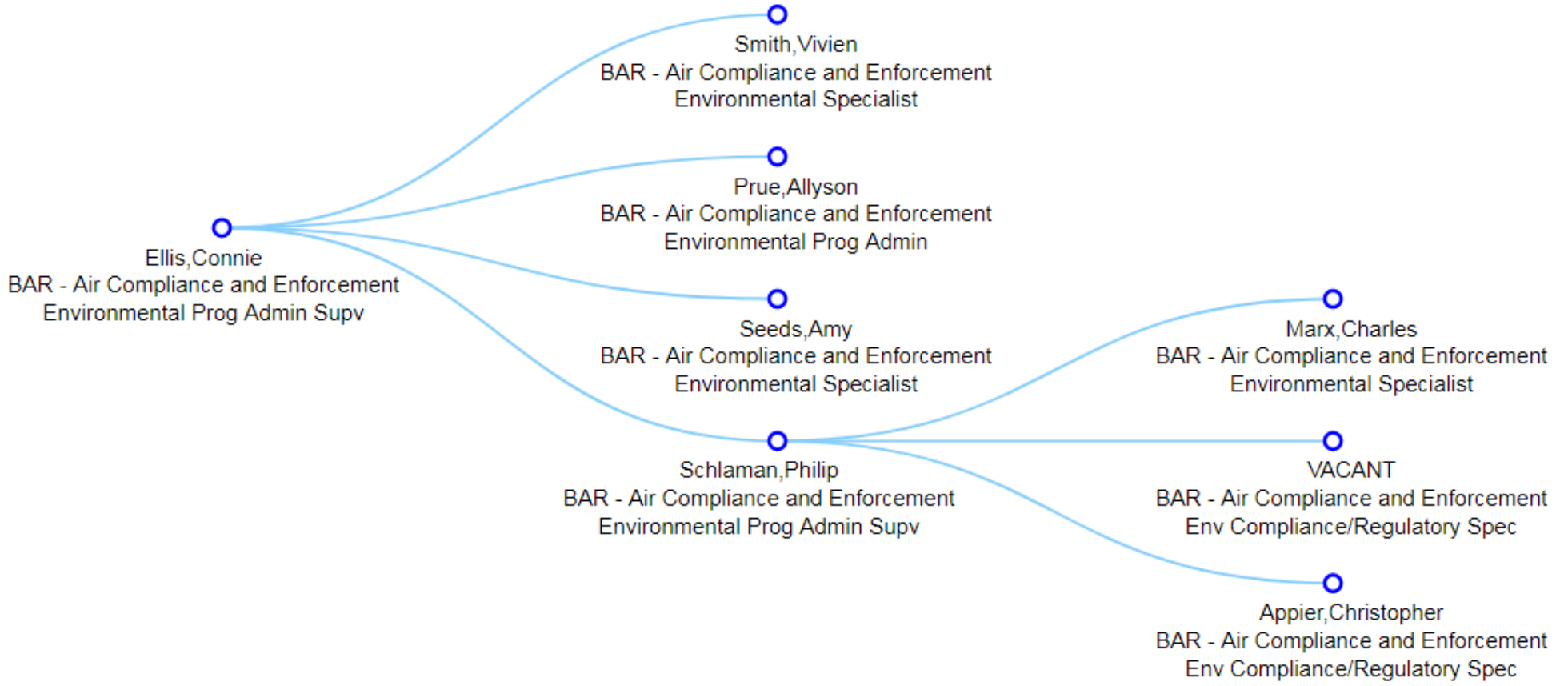




**KDHE Bureau of Air | Compliance and Enforcement Section**  
**CAAAG Update – SFY 2019 | Connie Ellis**

## Section Organization



## Inspection Totals – SFY 2019

- Total of 672\* inspections across 6 districts and 3 locals.
- There were 39 violations found during these inspections that warranted an informal enforcement (NON/LOW) or formal enforcement (CAO/AO).
- Approximately 6% warranted either informal/formal enforcement action
- \*inspection total lower due to new inspectors and training.

## Formal Enforcement Actions – SFY 2019

- Formal Enforcement Action is a consent agreement (“CAO”) or administrative order (“AO”).
- In SFY 2019, there were 24 CAO’s executed.
- There was 1 AO executed.

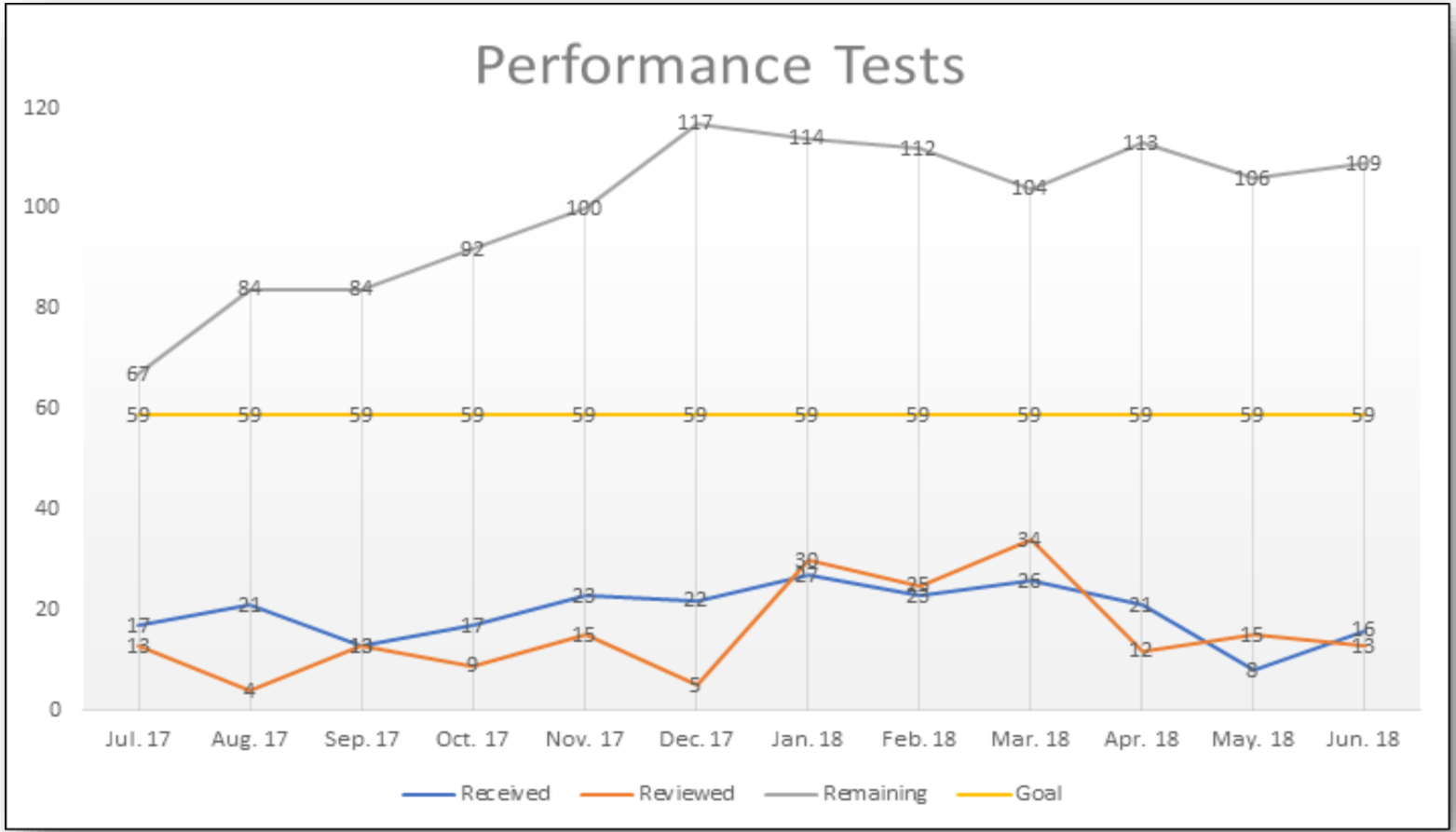
## Performance Testing – SFY 2019

- There were 135 performance tests conducted in Kansas.
  - Of this total, 27 (~20%\*) were observed.
- There were 41 Relative Accuracy Test Audits (“RATA”) conducted.
  - Of this total, 14 (~34%\*) were observed.
- \*testing observation numbers low due to 3 vacancies for 4 months.

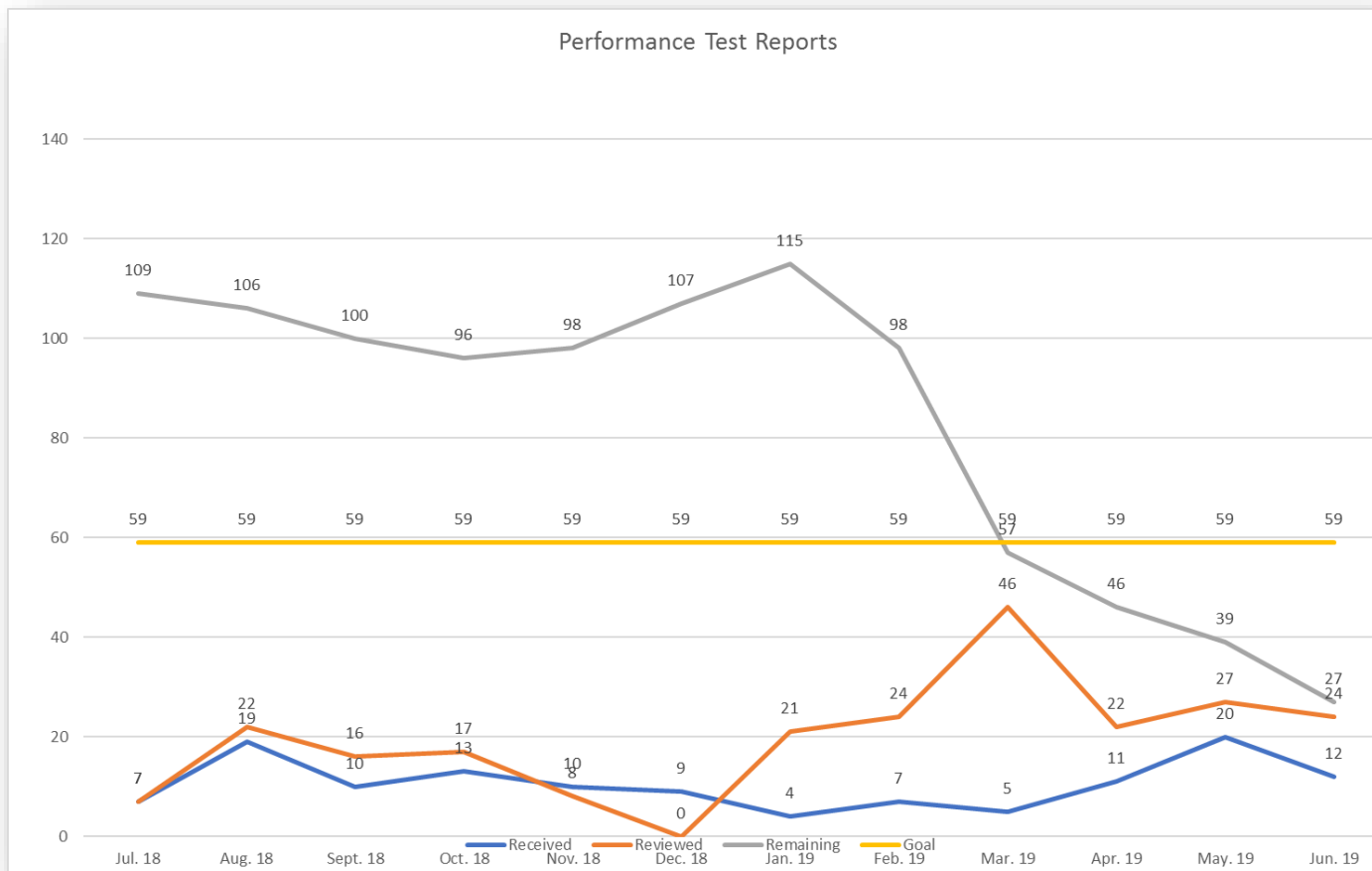
## Performance Testing – SYF 2019

- 100% of performance tests are reviewed. Last year there was a backlog....

## Performance Tests – SFY 2018

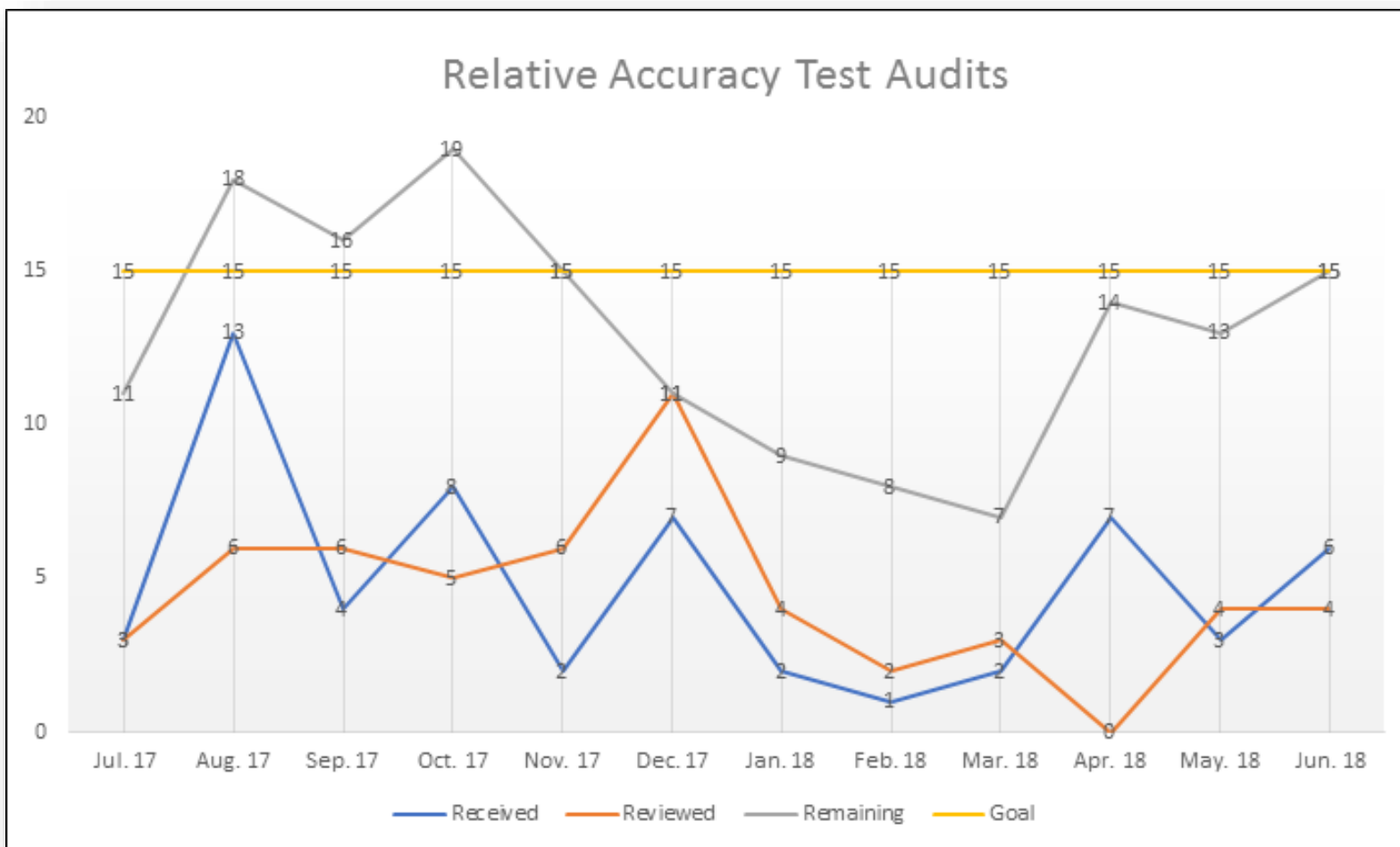


## Performance Test – SFY 2019

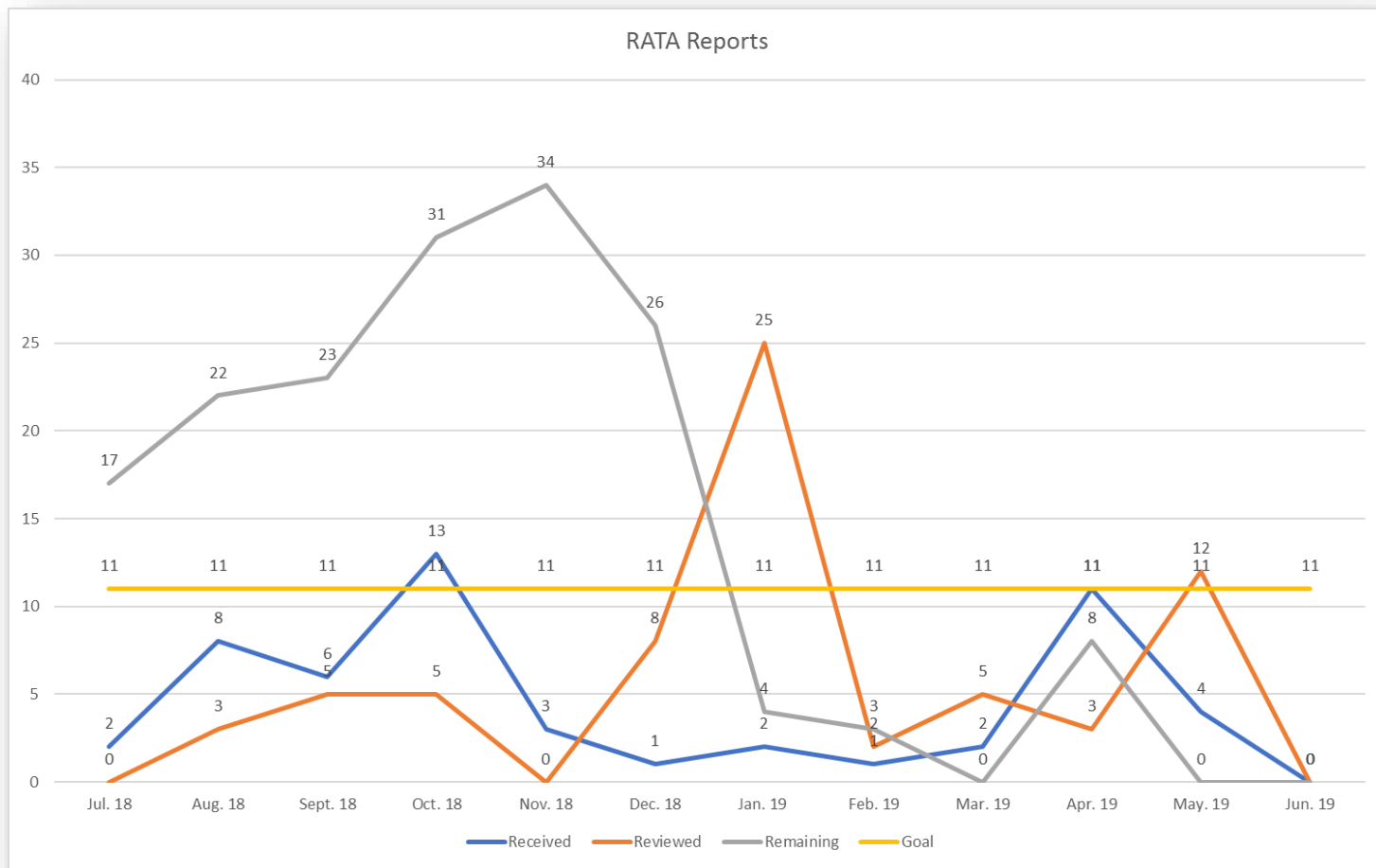


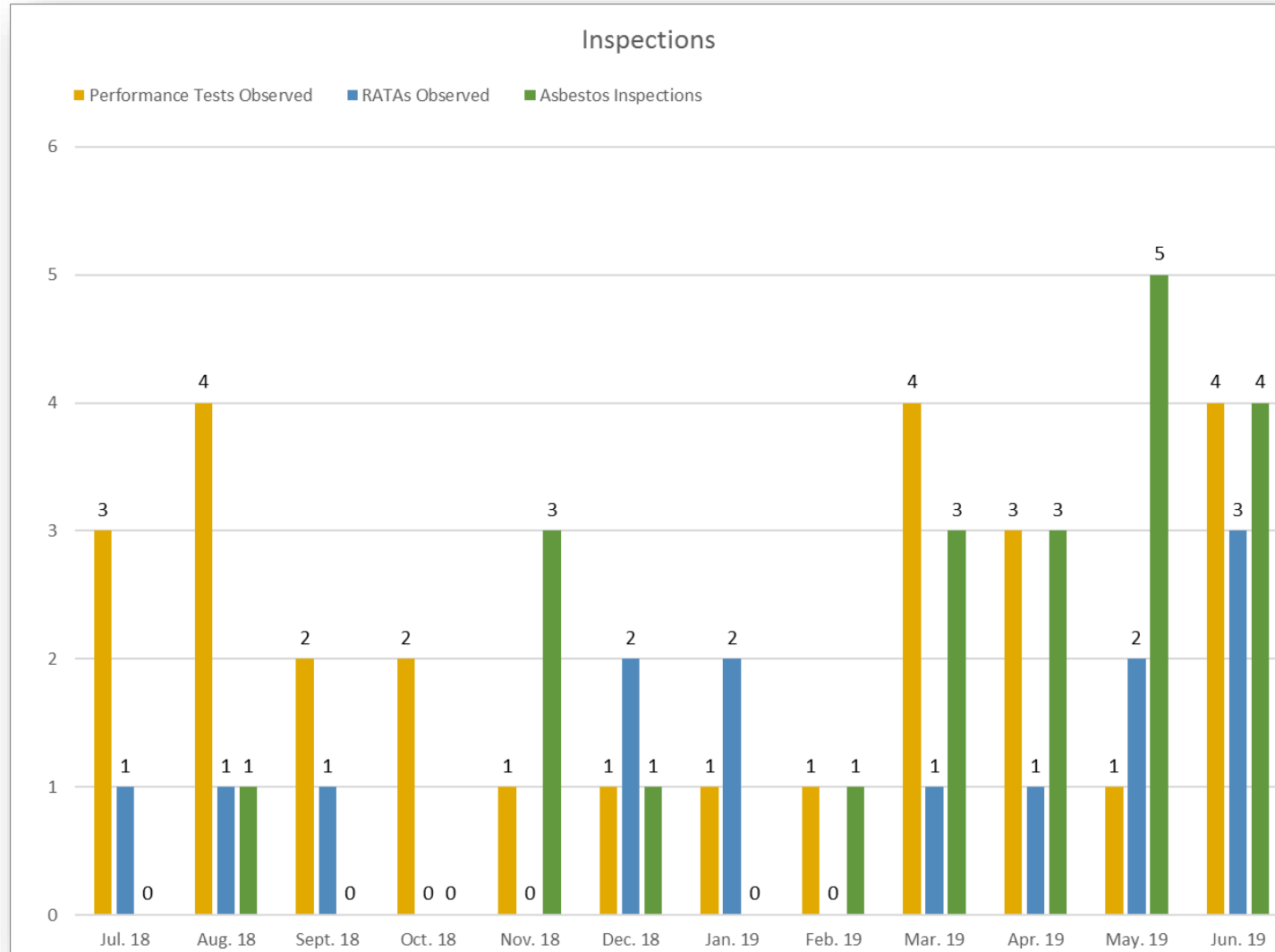


## RATA – SFY 2018



## RATA – SFY 2019





## Air Compliance and Enforcement Section ("ACES")

- Policy revisions by EOY 2019
  - Supplemental Environmental Program ("SEP")
  - Enforcement Policy and penalty matrix



## KEIMS Update:

- Will have table with informational packet at conference
- Permitting and Compliance/Enforcement staff available for questions.
- KEIMS address on KDHE BOA website

### *KS Environmental Information Management System*

- Create and Manage Permit Applications and Compliance Reports Online
- [Kansas Environmental Information Management System \(KEIMS\) Information](#)

## Thank you/Questions



**Connie Ellis**

Section Chief

Bureau of Air - KDHE

1000 SW Jackson, Suite 310

Topeka, KS 66612

(785) 296-1556

[Connie.Ellis@ks.gov](mailto:Connie.Ellis@ks.gov)