

Appendix D
Population, Growth and Employment

DRAFT

Table D-1. Summary of Population Data by County, 2000-2025

| County | Total Pop 2000 (people) | Total Pop 2005 (people) | Total Pop 2006 (people) | Total Pop 2007 (people) | Total Pop 2010 (people) | Total Pop 2015 (people) | Total Pop 2020 (people) | Total Pop 2025 (people) |
|--------------------|------------------------------------|------------------------------------|------------------------------------|------------------------------------|------------------------------------|------------------------------------|------------------------------------|------------------------------------|
| Douglas County | 100,288 | 104,466 | 108,517 | 113,488 | 116,671 | 126,485 | 137,530 | 149,986 |
| Franklin County | 24,784 | 25,708 | 26,007 | 26,479 | 26,848 | 28,004 | 29,282 | 30,686 |
| Johnson County | 451,479 | 486,752 | 506,299 | 526,319 | 561,556 | 626,723 | 701,381 | 786,890 |
| Leavenworth County | 68,691 | 71,233 | 71,816 | 73,603 | 77,489 | 82,361 | 87,741 | 93,690 |
| Linn County | 9,570 | 9,682 | 9,851 | 9,767 | 10,108 | 10,381 | 10,679 | 11,005 |
| Miami County | 28,351 | 28,951 | 29,944 | 31,078 | 32,611 | 34,967 | 37,564 | 40,429 |
| Wyandotte County | 157,882 | 156,230 | 154,381 | 153,956 | 153,838 | 152,431 | 151,492 | 151,021 |
| Bates County | 16,653 | 17,013 | 16,954 | 17,034 | 17,232 | 17,673 | 18,129 | 18,539 |
| Caldwell County | 8,969 | 9,086 | 9,165 | 9,284 | 9,342 | 9,656 | 9,987 | 10,312 |
| Cass County | 82,092 | 88,236 | 92,827 | 97,133 | 102,491 | 112,247 | 121,499 | 129,880 |
| Clay County | 184,006 | 193,769 | 201,195 | 211,952 | 220,635 | 241,150 | 261,469 | 281,228 |
| Clinton County | 18,979 | 20,023 | 20,440 | 20,894 | 22,015 | 23,459 | 24,821 | 26,049 |
| Jackson County | 654,880 | 661,668 | 662,647 | 666,890 | 668,867 | 678,274 | 689,226 | 701,350 |
| Lafayette County | 32,960 | 32,898 | 32,898 | 32,677 | 32,791 | 32,785 | 32,869 | 32,923 |
| Platte County | 73,781 | 79,334 | 82,207 | 84,881 | 88,964 | 95,966 | 102,810 | 109,228 |
| Ray County | 23,354 | 23,626 | 23,489 | 23,482 | 23,616 | 23,787 | 24,012 | 24,230 |

Source:

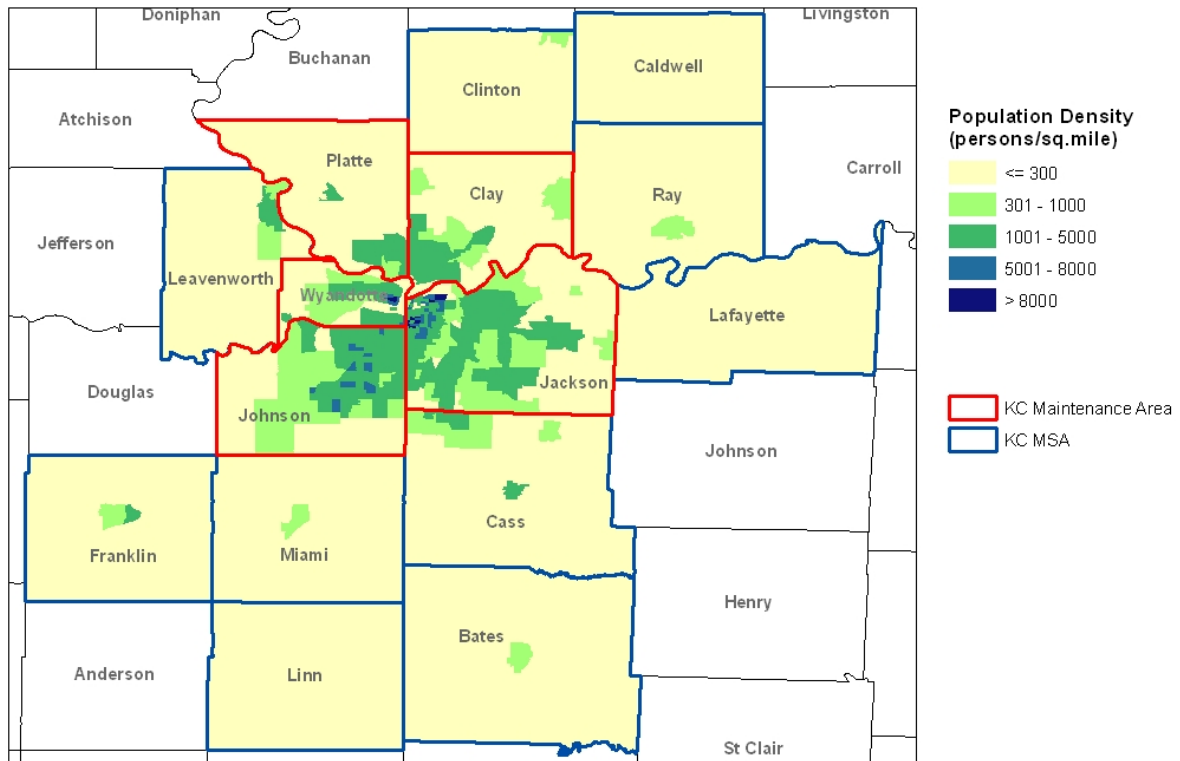
Population <http://factfinder.census.gov>

Kansas Projections <http://www.ipsr.ku.edu/ksdata/ksah/population/2pop17.xls>

Missouri Projections <http://oa.mo.gov/bp/projections/TotalPop.xls>

Figure D-1. Summary of Population Data by County 2000-2025

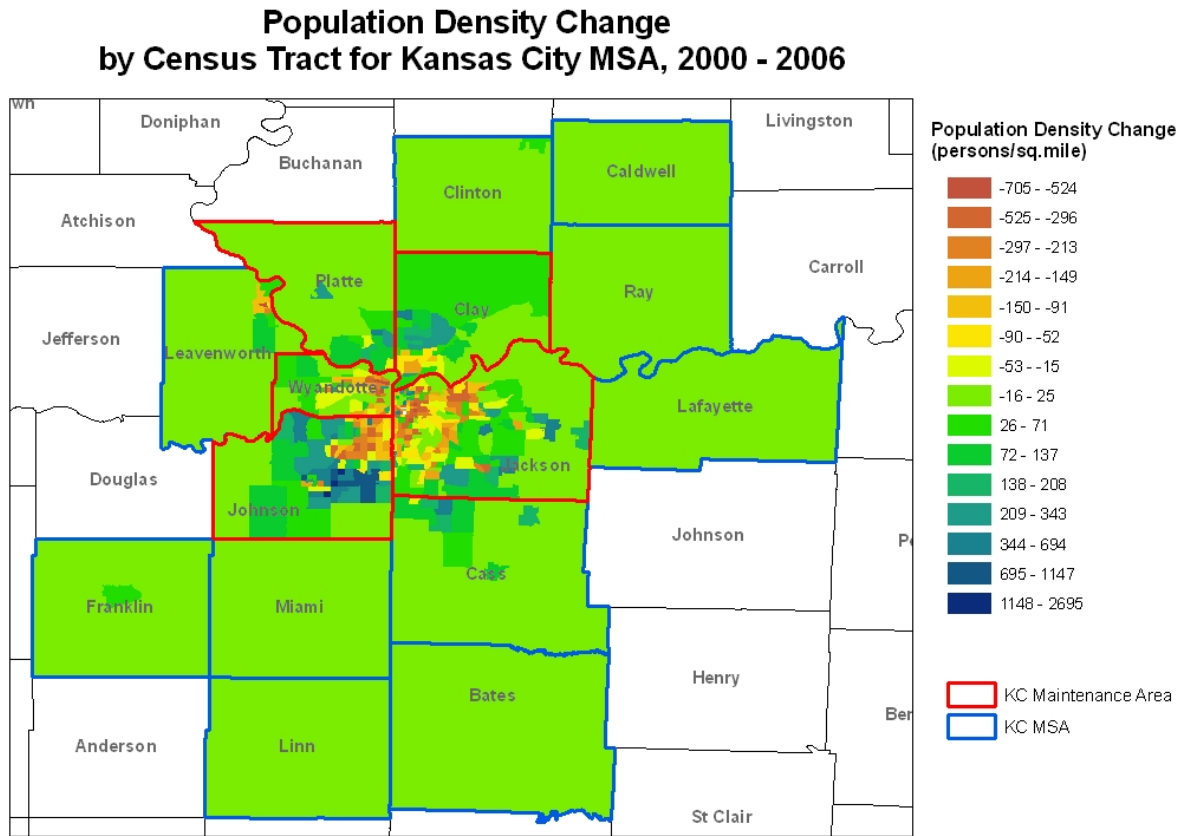
2006 Population Density by Census Tract



Source: 2000 Census Bureau Tiger File, 2006 Population Data from Mid-America Regional Council

DRAFT

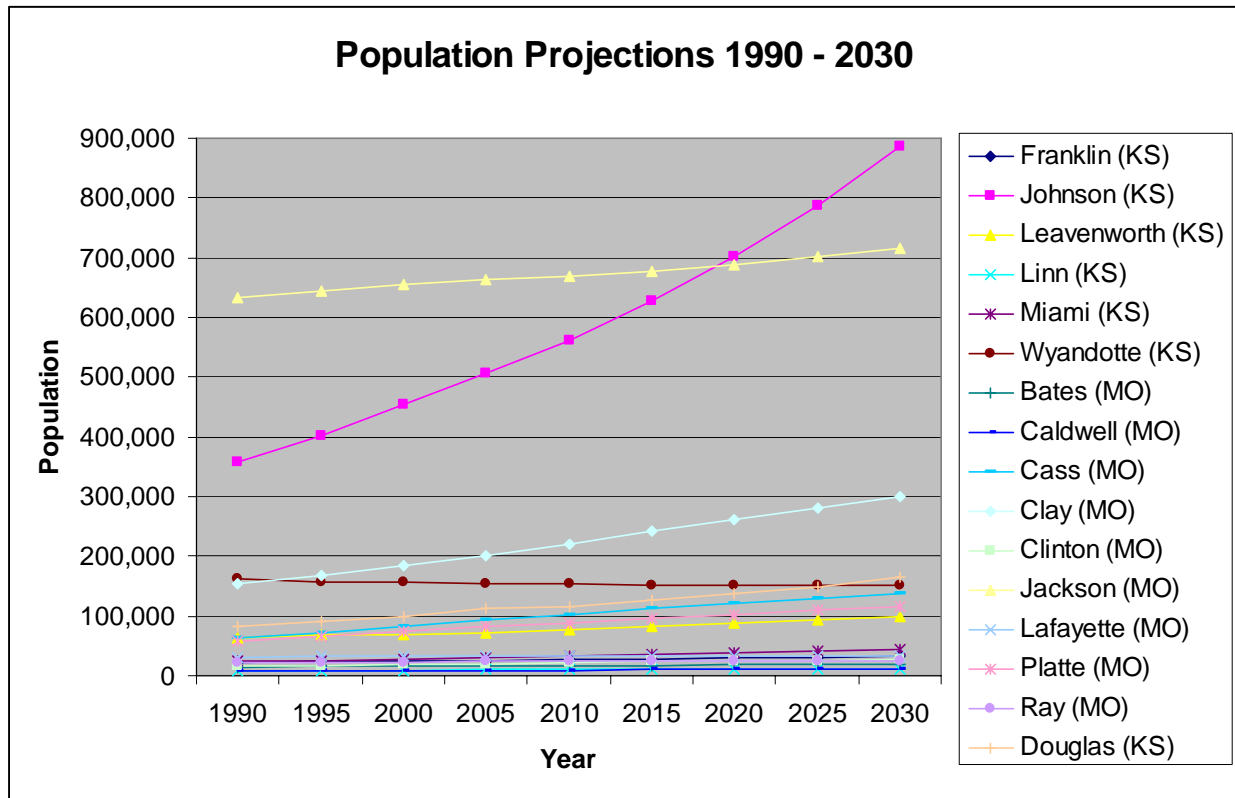
Figure D-2. 2000 to 2006 Population Density Change by Census Tract



Source: 2000 Census Bureau Tiger File. 2006 Population Data from Mid-America Regional Council

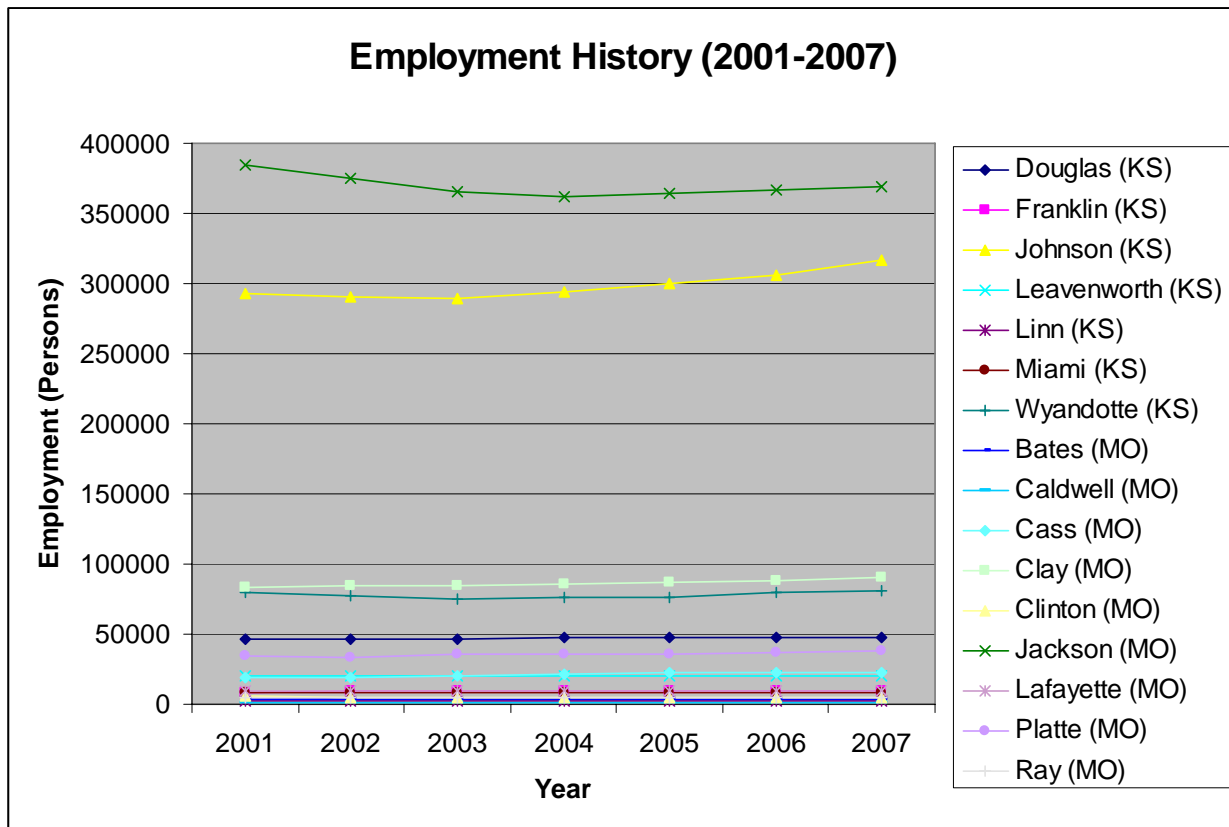
DK

Figure D-3. 1990 – 2030 Population Growth Projections by County



Source:
 Kansas Projections <http://www.ipsr.ku.edu/ksdata/ksah/population/2pop17.xls>
 Missouri Projections <http://oa.mo.gov/bp/projections/TotalPop.xls>

Figure D-4. Employment History 2001-2007



Source: U.S. Bureau of Labor Statistics

DRAFT