

Barton

Barton County Health Department

1300 N Kansas Ave, Ste B, Great Bend, KS 67530

ph:(620) 793-1902

<https://bchdhealth.com>

Crawford

Crawford County Health Department

410 E Atkinson Pittsburg, KS 66762

ph:(620) 231-5411

Serving: Bourbon, Cherokee & Crawford

<https://m.facebook.com/crawfordcountyhealthdepartment/>



Crawford

Community Health Center of Southeast Kansas

3011 N Michigan Pittsburg, KS 66762

ph:(620) 231-9873

Serving: Allen, Bourbon, Cherokee, Crawford, Labette, Linn & Montgomery.

<https://chcsek.org/>

Douglas

Lawrence-Douglas Health Department

200 Maine Street, Ste. B Lawrence, KS 66044

ph:(785) 843-3060

<https://ldchealth.org/466/Baby-Steps>



Geary

Delivering Change

1102 St. Mary's Road, Suite 106 Junction City, KS 66441

ph:(785) 238-0300

<https://deliveringchange.org/>

Johnson

Johnson County Health Department

11875 S Synset Dr., #300 Olathe, KS 66061

ph:(913) 477-8367

<https://www.jocogov.org/dept/health-and-environment/health/pregnancy-services/targeted-case-management?fbclid=IwAR02fUt8LE9AOQ9ptFRjbjkIOKgpjWJlBhFI4iB1sIPzx8fn99rqFkHVVYK84>



Leavenworth

Leavenworth County Health Department

500 Eisenhower Road, Ste 101, Leavenworth, KS 66048

ph:(913) 433-2023

https://www.leavenworthcounty.gov/departments/health_department/programs.php



Sedgwick (LYFTE)

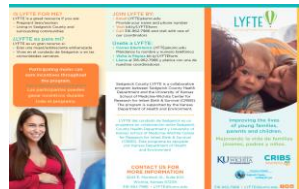
University of Kansas Medical Center –

School of Medicine Wichita

3243 E Murdock, Suite 602, Wichita, KS 67208

ph:(316) 962-7986

<https://wichita.kumc.edu/newsroom/lyfte-puts-young-parents-on-track-for-success.html>



Sedgwick

Wichita Children's Home

7271 E. 37th St. N., Wichita, KS 67226

ph:(316) 708-9104

Serving: Butler, Harvey, Sedgwick & Sumner

<https://wch.org/services/gerard-house>

Wyandotte

Unified Government Public Health Department

619 Ann Avenue. Kansas City, KS 66101

ph:(913) 573-6734

<https://www.wycokck.org/Departments/Health>

