

## Barton

Barton County Health Department  
1300 N Kansas Ave, Ste B, Great Bend, KS 67530  
ph:(620) 793-1902  
Serving: Barton & Pawnee  
<https://bchdhealth.com>

## Cowley

Family Life Services  
305 S Summit St., Arkansas City, KS 67005  
ph:(620) 441-3138  
<https://flsonline.net/>

## Johnson

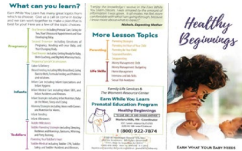
Catholic Charities of Northeast Kansas  
9720 W 87th Street, Overland Park, KS 66212  
ph:(913) 433-2063  
Serving: Anderson, Atchison, Brown, Coffey, Doniphan,  
Douglas, Franklin, Jackson, Jefferson, Johnson,  
Leavenworth, Linn, Lyon, Marshall, Miami, Nemaha,  
Osage, Potawatomi, Shawnee, Wabaunsee, Wyandotte.  
<https://catholiccharitiesks.org/pregnancy-counseling/>

## Leavenworth

Leavenworth County Health Department  
500 Eisenhower Road, Ste 101, Leavenworth, KS 66048  
ph:(913) 433-2023  
[https://www.leavenworthcounty.gov/departments/health\\_department/programs.php](https://www.leavenworthcounty.gov/departments/health_department/programs.php)

## Seward

Seward County Health Department  
1411 West 15<sup>th</sup> Street, Liberal, KS 67901  
ph:(620) 309-2079  
<http://www.sewardcountyks.org/497/Pregnancy-Maintenance-Initiative-PMI>



## Shawnee

GraceMed Health Clinic, Inc  
1400 SW Huntoon St, Topeka, KS 66604  
ph:(785) 861-8800 ext. 3369  
<https://gracemed.org/services/education-outreach/pregnancy-maintenance-initiative>

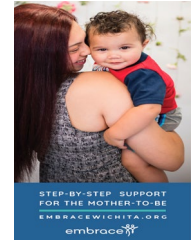


## Saline

Catholic Charities of Northern Kansas  
1500 S 9th St Ste 1, Salina, KS 67402 ph:(785) 825-0802  
212 S 4<sup>th</sup> St., Manhattan, KS ph:(785)625-2644  
Serving: Cheyenne, Clay, Cloud, Decatur, Dickinson, Ellis, Ellsworth,  
Geary, Gove, Graham, Jewell, Lincoln, Logan, Mitchell, Norton, Osborne,  
Ottawa, Phillips, Rawlins, Republic, Riley, Rooks, Russell, Salina, Sheridan,  
Sherman, Smith, Thomas, Trego, Wallace, Washington.  
<https://ccnks.org/pregnancy>

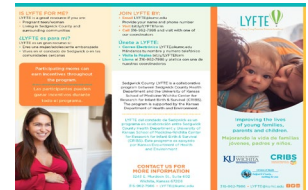
## Sedgwick

Embrace of Wichita, Inc.  
1040 N West St, Wichita, KS 67203  
ph:(316) 945-9400  
Serving: Harvey, Reno, Sedgwick, Sumner.  
<https://embracewichita.org/free-pregnancy-clinic/community-resources/>



## Sedgwick (LYFTE)

University of Kansas Medical Center –  
School of Medicine Wichita  
3243 E Murdock, Suite 602, Wichita, KS 67208  
ph:(316) 962-7986  
<https://wichita.kumc.edu/newsroom/lyfte-puts-young-parents-on-track-for-success.html>



## Sedgwick

Wichita Children's Home  
7271 E. 37<sup>th</sup> St. N., Wichita, KS 67226  
ph:(316) 708-9104  
Serving: Butler, Harvey, Sedgwick, Sumner  
<https://wch.org/services/gerard-house>