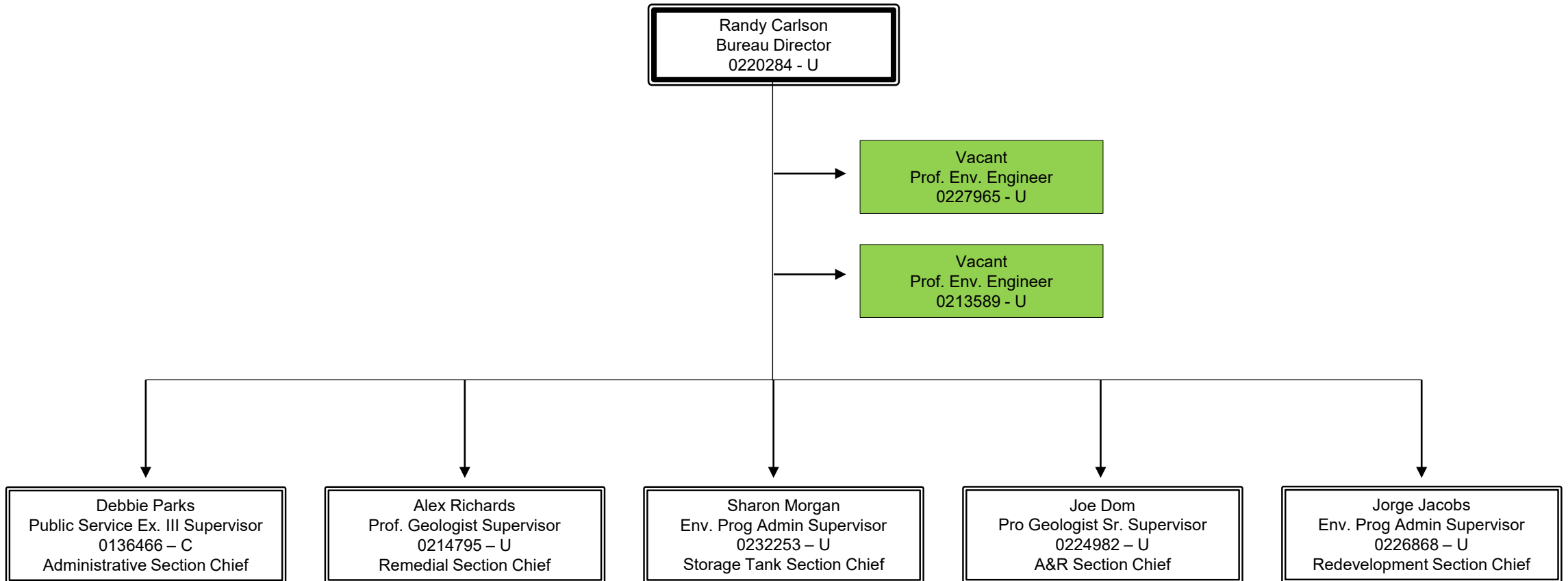


# Division of Environment Bureau of Environmental Remediation

## Overview of Sections

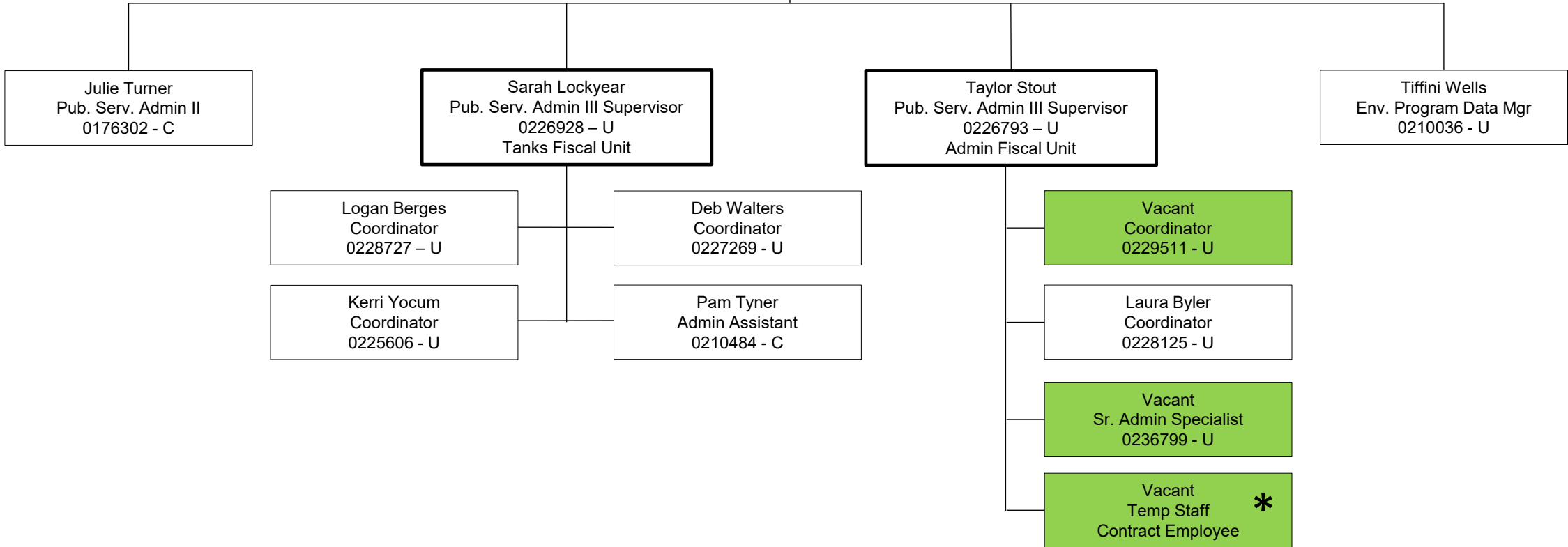


**Division of Environment  
Bureau of Environmental Remediation**

Magen Salley  
Health/Env. Program Analyst

Administrative Section

Debbie Parks  
Public Service Ex. III Supervisor  
0136466 – C  
Administrative Section Chief



**Division of Environment  
Bureau of Environmental Remediation**

Remedial Section

Alex Richards  
Prof. Geologist Supervisor  
0214795 - U  
Remedial Section Chief

Vacant  
Admin Specialist  
0230292 - U

Vacant  
Admin Assistant  
0233483 - U

Laura Metheny  
Env. Specialist Supervisor  
0236596 - U  
Federal Facilities Unit

Levi Crooke  
Prof. Geologist Supervisor  
0233244 - U  
Site Remediation Unit

Brittany Frost (starts 1/23)  
Env. Specialist Supervisor  
0225357 - U  
Site Restoration Unit

Jesse Saegert  
Env. Specialist  
0216849 - U

Kyle Skeese  
Geology Trainee  
0207453 - U

Vacant  
Env. Specialist  
0226882 - U

Cody Totten  
Geology Trainee  
0237025 - U

Ashley Carpenter  
Env. Specialist  
0210853 - U

Mary Daily  
Prof. Geologist  
0210431 - C

Pamela Green  
Env. Specialist  
0216913 - U

Moses Kosin  
Env. Specialist  
0224934 - U

Anjali Khisty  
Geology Trainee  
0230134 - U

John Cook  
Prof. Geologist II  
0236601 - U

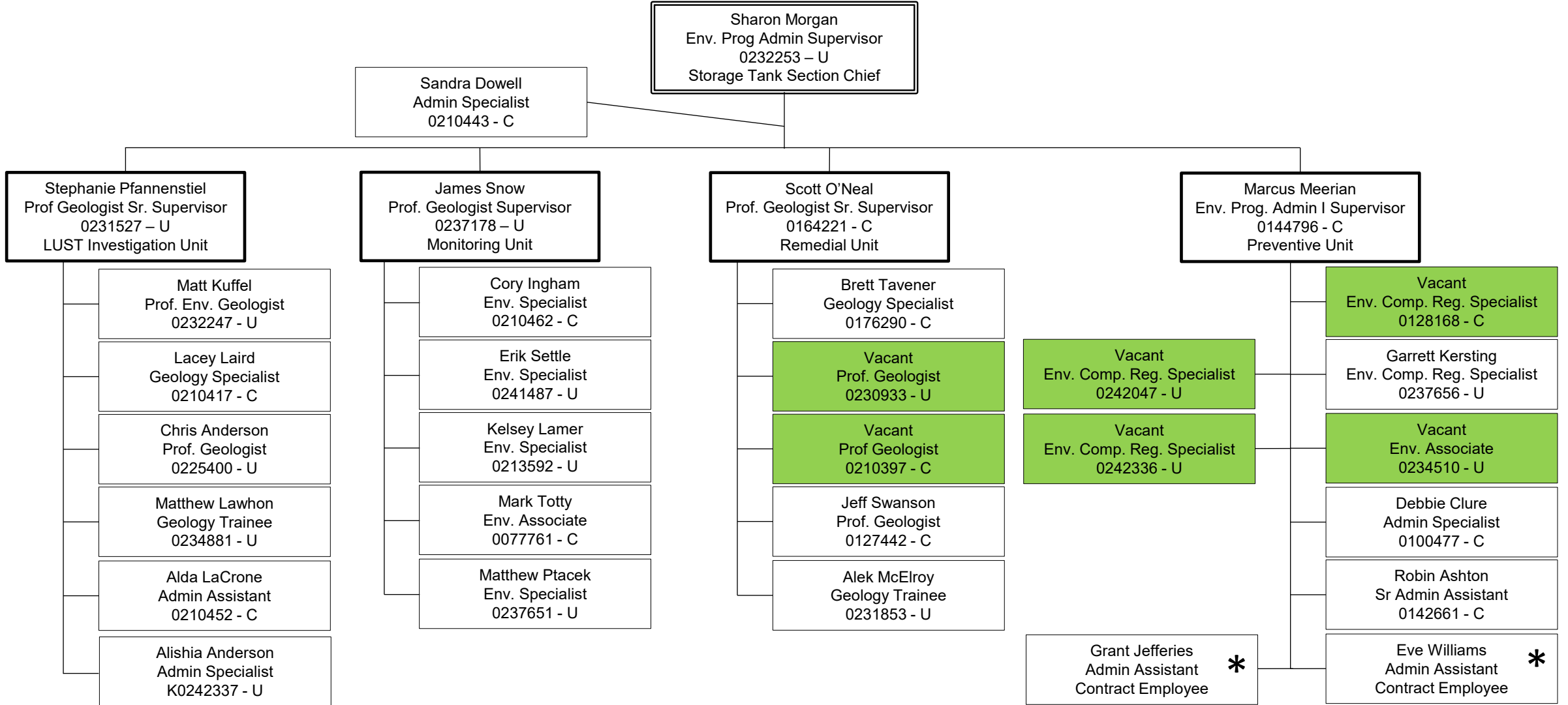
Vacant  
Env. Specialist  
0209406 - U

Sitney Day  
Geology Associate  
0227597 - U

Julie Manders  
Geology Associate  
0229058 - U

# Division of Environment Bureau of Environmental Remediation

## Storage Tanks Section



# Division of Environment Bureau of Environmental Remediation

## Assessment & Restoration Section

Joe Dom  
Pro Geologist Sr. Supervisor  
0224982 - U  
A&R Section Chief

Destiny Quick  
Sr. Admin Assistant  
0236182 - U

Angie Booth  
Admin Specialist  
0233250 - U

Darryl Morgan  
Prof. Geologist Supervisor  
0227662 - U  
Site Response Unit

Vacant  
Prof. Env Geologist Supervisor  
0215054 - U  
Drycleaner/Superfund Unit

Kathleen Bleach  
Prof. Geologist Supervisor  
0228293 - U  
Orphan Sites Unit

Delbert Smith  
Env. Spec./Spills Coordinator  
0234757 - U

Colby Gouge  
Env. Associate  
0230620 - U

Vacant  
Prof. Env. Geologist  
0229938 - U

Wilhelm Fraundorfer  
Prof. Env. Geologist  
0229188 - U

Chantry Klaus  
Env. Associate  
0233717 - U

Markell K. Bateman  
Env. Associate  
0233549 - U

Wyatt Harness  
Geology Associate  
0235850 - U

Vacant  
Env. Specialist  
0236794 - U

Vacant  
Geology Associate  
0231538 - U

Chris Wierman  
Geology Associate  
0231119 - U

Sean Hammersburg  
Geology Associate  
0227978 - U

Eian Loomis  
Env. Specialist  
0240982 - U

Jesse Cutter  
Geology Associate  
0229047 - U

Vacant  
Env. Specialist  
0180355 - U

Carlos Andrade  
Geology Associate  
0232025 - U

Vacant  
Geology Associate  
0227481 - U

# Division of Environment Bureau of Environmental Remediation

## Redevelopment Section

Jorge Jacobs  
Env. Prog Admin Supervisor  
0226868 - U  
Redevelopment Section Chief

Joyce McConnell  
Sr. Admin Assistant  
0232250 - U

Marlene Spence  
Env. Prog. Admin Supervisor  
0232005 - U  
Surface Mining Unit

Deanna Ross  
Prof. Geologist Sr. Supervisor  
0156810 - C  
Voluntary Cleanup Unit

Andrea Schiller  
Prof. Env. Geologist Supervisor  
0226916 - U  
LTS/Brownfields Unit

Birgit Rigensberg  
Public Service Administrator  
0236410 - U

James Johnson  
Env. Comp/Reg. Specialist  
0216205 - U

Tony Anderson  
Env. Specialist  
0224357 - U

Clarence Johnson  
Env. Associate  
0132451 - C

Caitlyn Sanders  
Env. Specialist  
0239640 - U

Tyler Logan  
Env. Associate  
0237964 - U

Michael Worsley  
Env. Specialist  
0224286 - U

Vacant  
Env. Specialist  
0229182 - U

Daniel Minke  
Geology Specialist  
0210374 - C

Vacant  
Env. Specialist  
0231130 - U

Andrew (Drew) Talcott  
Env. Specialist  
0210528 - U

Allison Immel  
Env. Specialist  
K0244721 - Part time

Dayton Allen  
Env. Specialist  
0224153 - U

Seth Mettling  
Env. Specialist  
0209593 - U

Stephanie Farve  
Env. Specialist  
0232301 - U

Aspen Junge  
Research Analyst  
0173612 - U