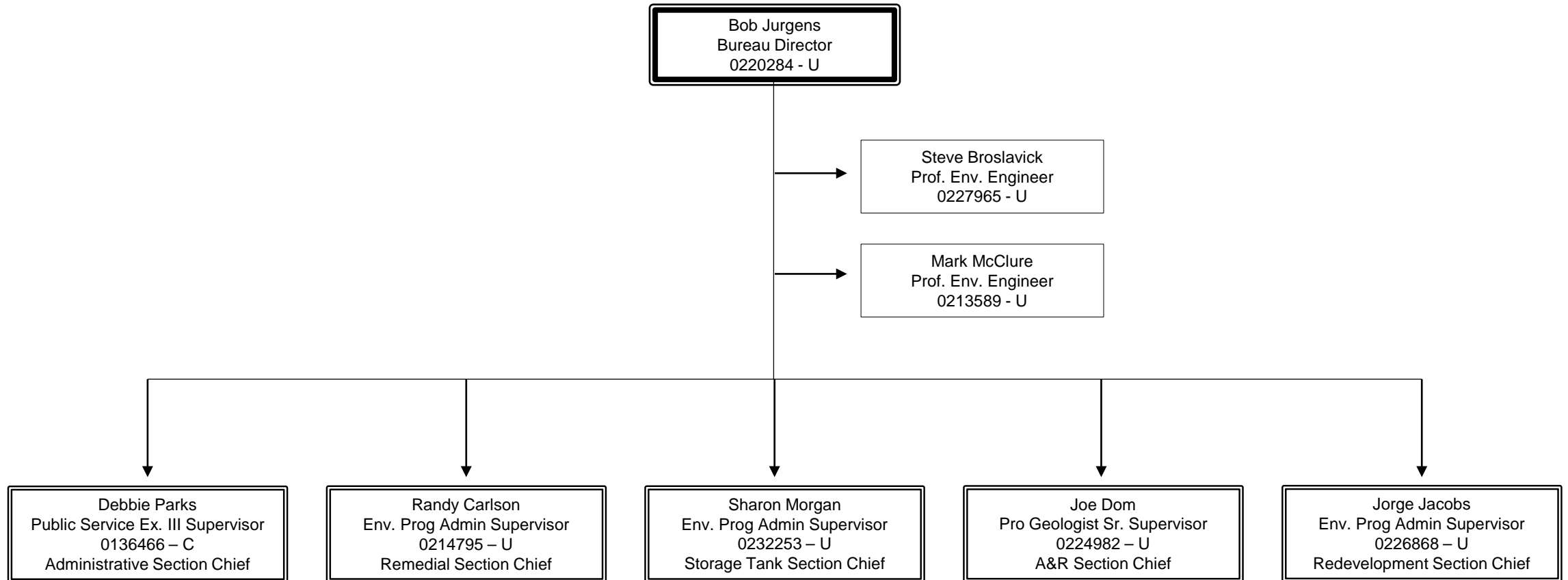


Division of Environment Bureau of Environmental Remediation

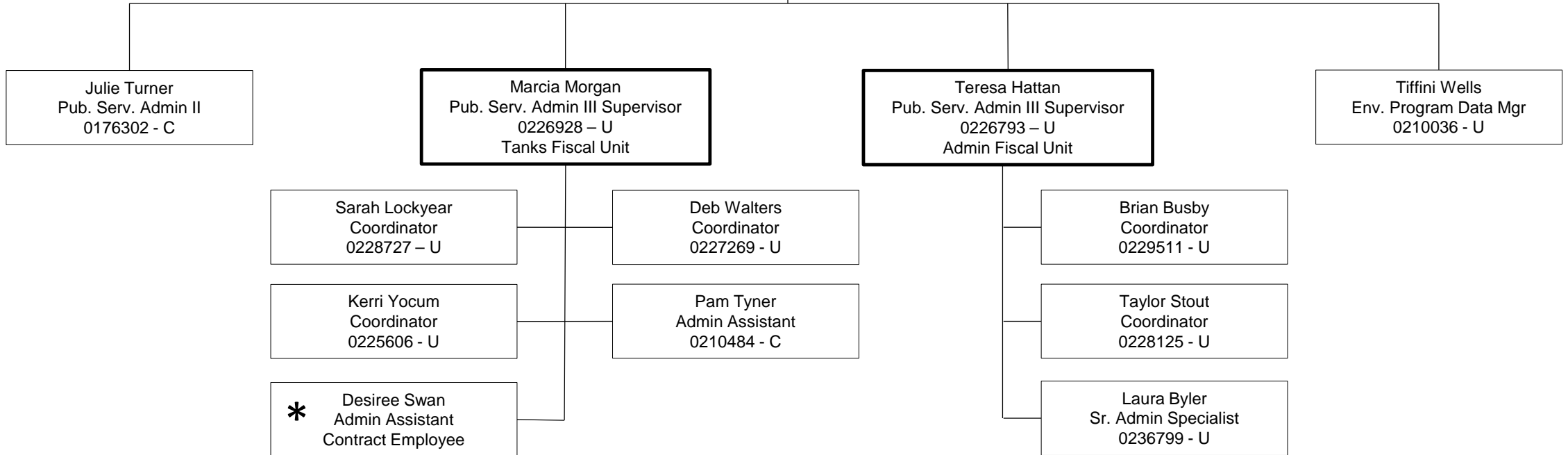
Overview of Sections



**Division of Environment
Bureau of Environmental Remediation**

Administrative Section

Debbie Parks
Public Service Ex. III Supervisor
0136466 - C
Administrative Section Chief



**Division of Environment
Bureau of Environmental Remediation**

Remedial Section

Randy Carlson
Env. Prog Admin Supervisor
0214795 - U
Remedial Section Chief

Rachel Pierson
Admin Specialist
0230292 - U

Haylie Asher
Admin Assistant
0233483 - U

Margaret Townsend
Prof. Geologist Supervisor
0236596 - U
Federal Facilities Unit

Levi Crooke
Prof. Geologist Supervisor
0233244 - U
Site Remediation Unit

Alex Richards
Prof. Env. Geologist Supervisor
0225357 - U
Site Restoration Unit

Vacant
Env. Specialist
0216849 - U

Matt Hartung
Geology Trainee
0207453 - U

Laura Metheny
Env. Specialist
0226882 - U

Vacant
Geology Trainee
0237025 - U

Morgan Johannesen
Geology Trainee
0210853 - U

Mary Daily
Prof. Geologist
0210431 - C

Pamela Green
Env. Specialist
0216913 - U

James Hayes
Env. Specialist
0224934 - U

Vacant
Geology Trainee
0230134 - U

John Cook
Prof. Geologist II
0236601 - U

Brian Willard
Env. Specialist
0209406 - U

Sitney Day
Geology Trainee
0227597 - U

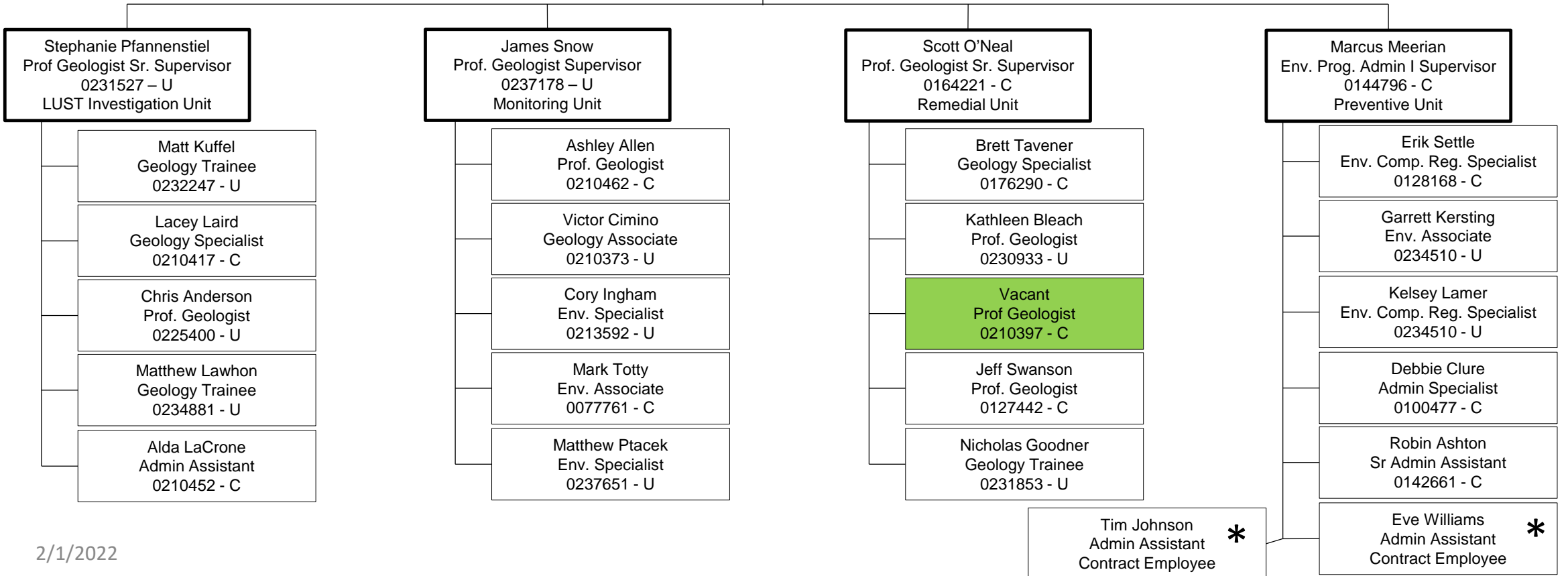
Julie Manders
Geology Associate
0229058 - U

Division of Environment Bureau of Environmental Remediation

Storage Tanks Section

Sharon Morgan
Env. Prog Admin Supervisor
0232253 – U
Storage Tank Section Chief

Vacant
Admin Specialist
0210443 - C



**Division of Environment
Bureau of Environmental Remediation**

Assessment & Restoration Section

Joe Dom
Pro Geologist Sr. Supervisor
0224982 - U
A&R Section Chief

Vacant
Sr. Admin Assistant
0236182 - U

Angie Booth
Admin Specialist
0233250 - U

Darryl Morgan
Prof. Geologist Supervisor
0227662 - U
Site Response Unit

Vacant
Prof. Env Geologist Supervisor
0215054 - U
Drycleaner/Superfund Unit

Vacant
Prof. Geologist Supervisor
0228293 - U
Orphan Sites Unit

Delbert Smith
Env. Spec./Spills Coordinator
0234757 - U

Colby Gouge
Env. Associate
0230620 - U

Creenen McGuire
Geology Associate
0229938 - U

Vacant
Prof. Env. Geologist
0229188 - U

Chantry Klaus
Env. Associate
0233717 - U

Markell K. Bateman
Env. Associate
0233549 - U

Lisa Beattie
Geology Trainee
0235850 - U

Peyton Witham
Env. Specialist
0236794 - U

Ria Mukherjee
Geology Associate
0231538 - U

Chris Wierman
Geology Associate
0231119 - U

Sean Hammersburg
Geology Associate
0227978 - U

Mayria Becker
Env. Specialist
0240982 - U

Jesse Cutter
Geology Associate
0229047 - U

Sara Ridinger
Env. Specialist
0180355 - U

Carlos Andrade
Geology Associate
0232025 - U

Wyatt Harness
Geology Trainee
0227481 - U

Division of Environment Bureau of Environmental Remediation

Redevelopment Section

Jorge Jacobs
Env. Prog Admin Supervisor
0226868 - U
Redevelopment Section Chief

Joyce McConnell
Sr. Admin Assistant
0232250 - U

Marlene Spence
Env. Prog. Admin Supervisor
0232005 - U
Surface Mining Unit

Deanna Ross
Prof. Geologist Sr. Supervisor
0156810 - C
Voluntary Cleanup Unit

Andrea Schiller
Prof. Env. Geologist Supervisor
0226916 - U
LTS/Brownfields Unit

Birgit Rigensberg
Admin Specialist
0236410 - U

Martin O'Brien
Env. Comp/Reg. Specialist
0216205 - U

Tony Anderson
Env. Specialist
0224357 - U

Clarence Johnson
Env. Associate
0132451 - C

Caitlyn Sanders
Env. Specialist
0239640 - U

Aaron Burrows
Env. Associate
0237964 - U

Bryce Zirfas
Env. Specialist
0224286 - U

Ty Tenpenny
Geology Associate
0229182 - U

Allison Immel
Geology Specialist
0210374 - C

Brittany Bennett
Env. Specialist
0231130 - U

Chris Girardri
Geology Trainee
0210528 - U

Dayton Allen
Env. Specialist
0224153 - U

Seth Mettling
Env. Specialist
0209593 - U

Stephanie Farve
Env. Specialist
0232301 - U

Aspen Junge
Research Analyst
0173612 - U