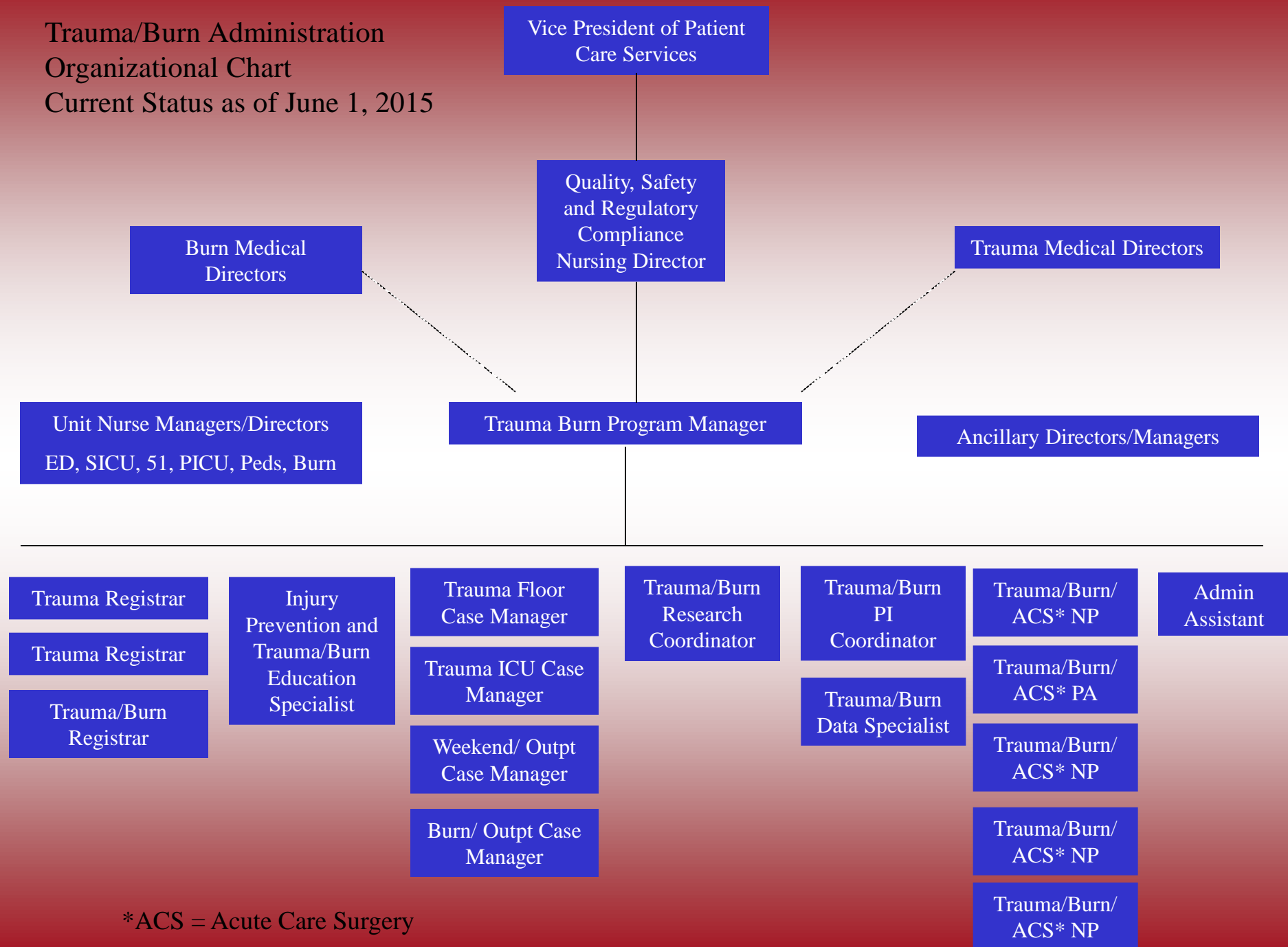


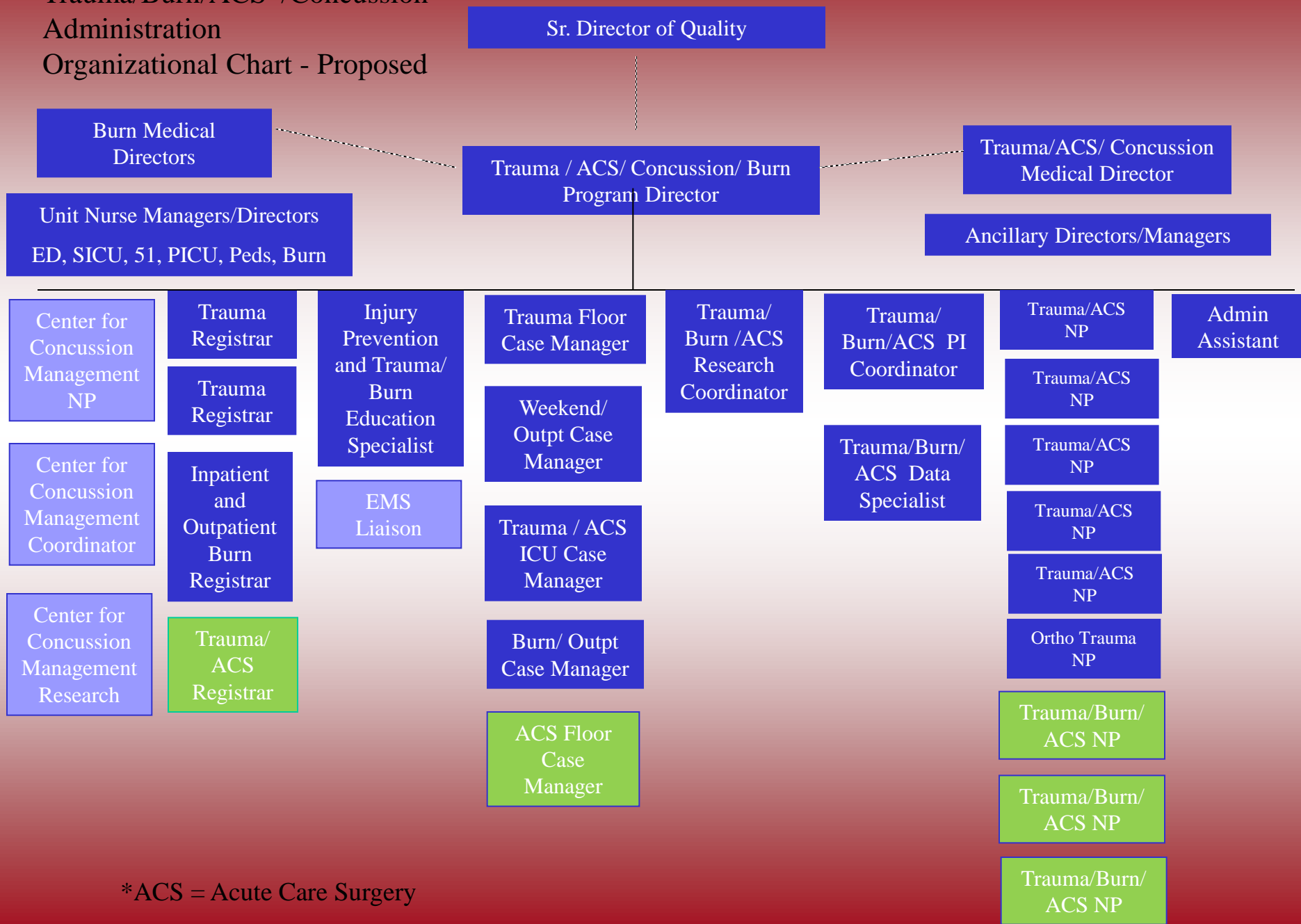
Trauma/Burn Administration
 Organizational Chart
 Current Status as of June 1, 2015



*ACS = Acute Care Surgery

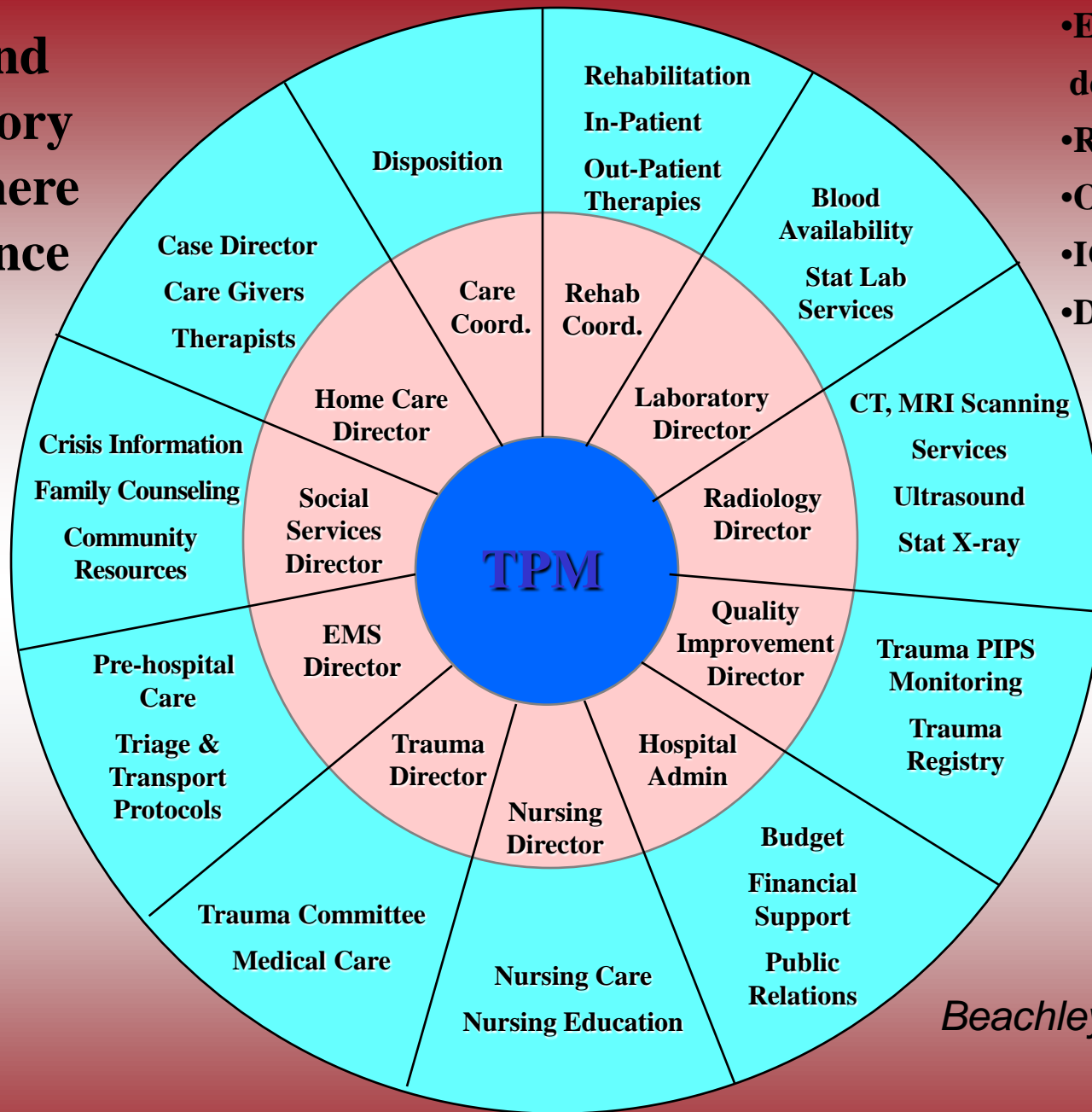
Trauma/Burn/ACS*/Concussion Administration

Organizational Chart - Proposed



*ACS = Acute Care Surgery

Acute and Ambulatory TPM Sphere of Influence



- Emergency department
- Resuscitation
- OR- surgery
- ICU- stabilization
- D/C plan- rehab

Beachley, M

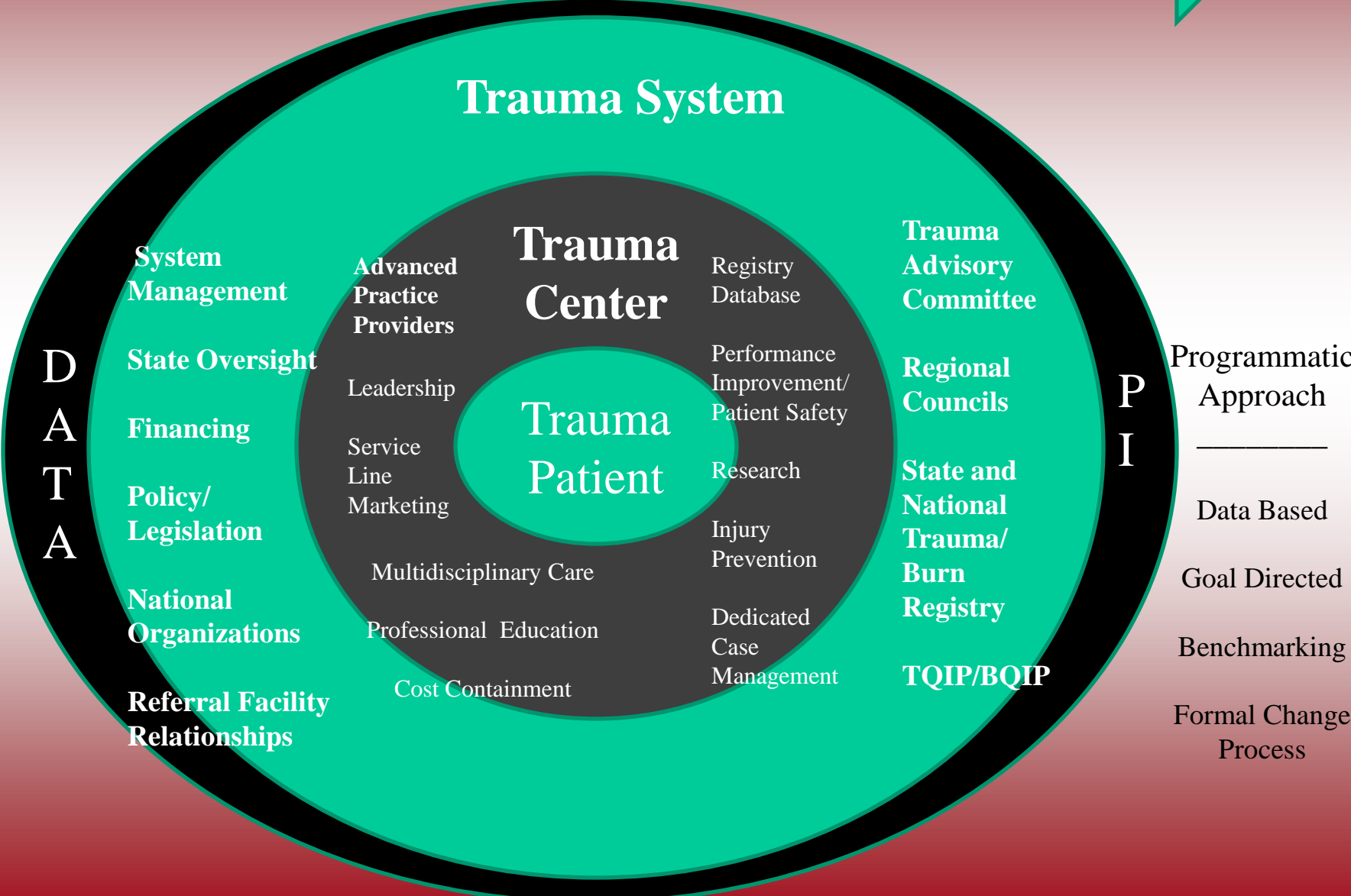
Injury Prevention

Prehospital

Definitive Care

Ambulatory Care

Reintegration





Organizational Structure

- Reporting and Accountability
 - Institution dependent
 - Must facilitate direction and communication
 - Location on organizational chart
 - Must develop a power base
 - Credibility and authority