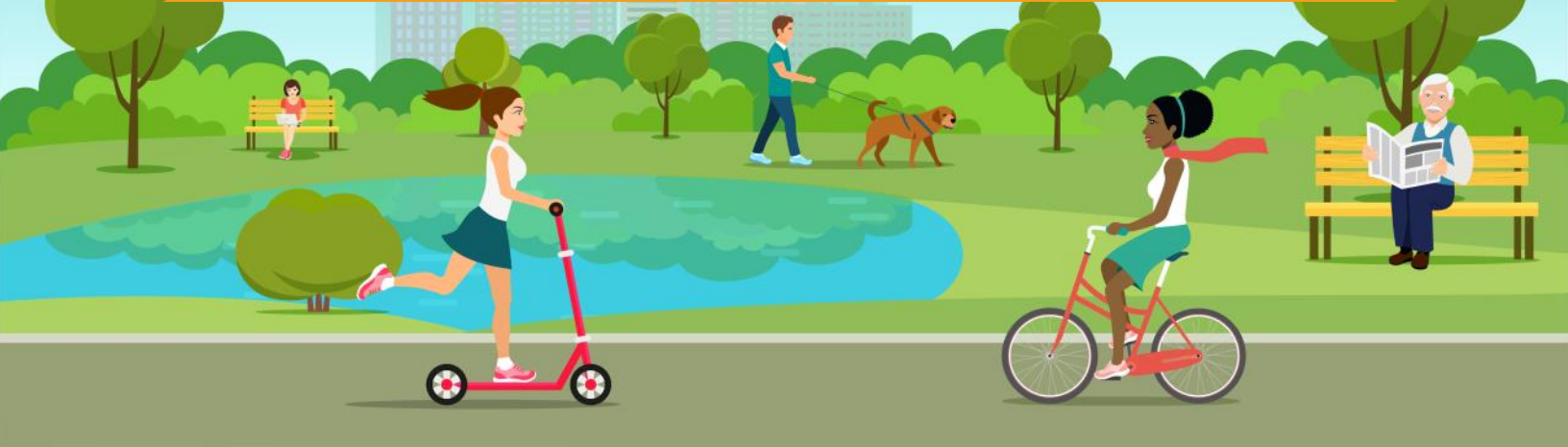


Chronic Health Conditions Among Adults*

Kansas City Area Coalition, 2017



High Blood Pressure



27.5%

Excluding high blood pressure during pregnancy.

Obesity



28.7%

Body mass index (BMI) ≥ 30 kg/m² determined by self-reported weight and height.

Arthritis



21.1%

Including rheumatoid arthritis, gout, lupus, fibromyalgia, or some form of arthritis, excluding osteoporosis.

Depressive Disorder



21.0%

Including depression, major depression, dysthymia, or minor depression.

Diabetes



8.8%

Excluding diabetes during pregnancy or prediabetes or borderline diabetes.

Asthma



9.8%

Respondents were defined as having asthma if they were ever told they had asthma and still have asthma.

Cancer



5.9%

Excluding all types of skin cancer

COPD



5.4%

Including chronic obstructive pulmonary disease (COPD), emphysema, or chronic bronchitis.

Skin Cancer



5.9%

Any types of skin cancer including carcinoma, melanoma and sarcoma.

Coronary Heart Disease



2.9%

Including angina or coronary heart disease. Excluding heart attack/myocardial infarction.

Stroke



2.5%

Any types of stroke including ischemic and hemorrhagic stroke.

Kidney Disease



2.2%

Not including kidney stones, bladder infection or incontinence (not being able to control urine flow).

* Respondents were identified as having the chronic condition if they had ever been told by a doctor, nurse, or other health professional that they had that chronic condition.

Kansas City Area Coalition counties: Douglas, Johnson, Leavenworth, Linn, Miami, Wyandotte.

Kansas Behavioral Risk Factor Surveillance System-Local Data, 2017. Kansas Department of Health and Environment, Bureau of Health Promotion website. Available at <http://www.kdheks.gov/brfss/BRFSS2017/index.html>. Accessed July 21, 2019.

Supported by grants from the Health Forward Foundation, Kansas Health Foundation, REACH Healthcare Foundation, Sunflower Foundation and the Centers for Disease Control and Prevention.

