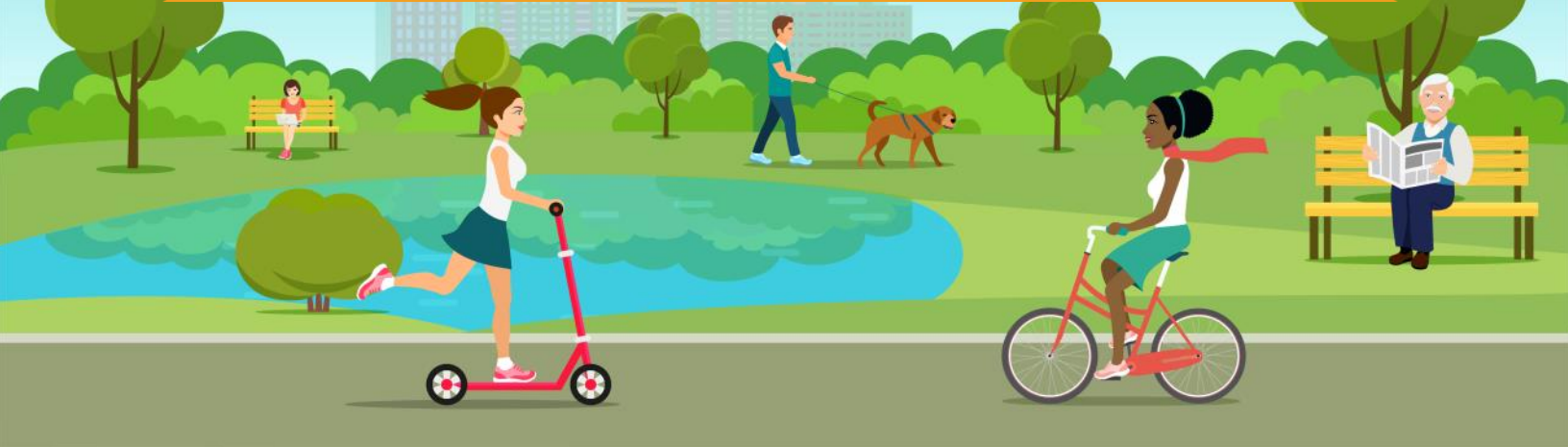


# Chronic Health Conditions Among Adults\*

Northeast Corner Regionalization Initiative, 2017



## High Blood Pressure



**35.5%**

Excluding high blood pressure during pregnancy.

## Obesity



**37.5%**

Body mass index (BMI)  $\geq 30$  kg/m<sup>2</sup> determined by self-reported weight and height.

## Arthritis



**25.4%**

Including rheumatoid arthritis, gout, lupus, fibromyalgia, or some form of arthritis, excluding osteoporosis.

## Depressive Disorder



**23.1%**

Including depression, major depression, dysthymia, or minor depression.

## Diabetes



**11.5%**

Excluding diabetes during pregnancy or prediabetes or borderline diabetes.

## Asthma



**9.5%**

Respondents were defined as having asthma if they were ever told they had asthma and still have asthma.

## Cancer



**7.3%**

Excluding all types of skin cancer

## COPD



**7.0%**

Including chronic obstructive pulmonary disease (COPD), emphysema, or chronic bronchitis.

## Skin Cancer



**7.2%**

Any types of skin cancer including carcinoma, melanoma and sarcoma.

## Coronary Heart Disease



**4.2%**

Including angina or coronary heart disease. Excluding heart attack/myocardial infarction.

## Stroke



**2.9%**

Any types of stroke including ischemic and hemorrhagic stroke.

## Kidney Disease



**4.1%**

Not including kidney stones, bladder infection or incontinence (not being able to control urine flow).

\* Respondents were identified as having the chronic condition if they had ever been told by a doctor, nurse, or other health professional that they had that chronic condition.

Northeast Corner Regionalization Initiative counties: Atchison, Brown, Doniphan, Jackson, Jefferson, Marshall, Nemaha, Shawnee.

Kansas Behavioral Risk Factor Surveillance System-Local Data, 2017. Kansas Department of Health and Environment, Bureau of Health Promotion website. Available at <http://www.kdheks.gov/brfss/BRFSS2017/index.html>. Accessed July 21, 2019.

Supported by grants from the Health Forward Foundation, Kansas Health Foundation, REACH Healthcare Foundation, Sunflower Foundation and the Centers for Disease Control and Prevention.

