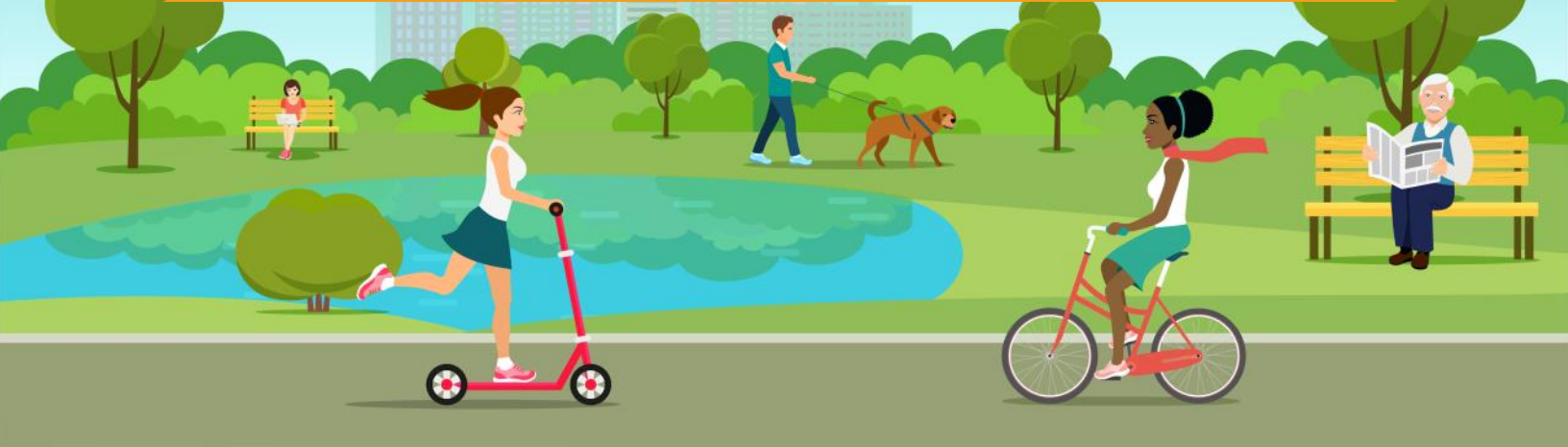


Chronic Health Conditions Among Adults*

Northwest BT Region, 2017



High Blood Pressure



35.6%

Excluding high blood pressure during pregnancy.

Obesity



31.8%

Body mass index (BMI) ≥ 30 kg/m² determined by self-reported weight and height.

Arthritis



26.4%

Including rheumatoid arthritis, gout, lupus, fibromyalgia, or some form of arthritis, excluding osteoporosis.

Depressive Disorder



17.2%

Including depression, major depression, dysthymia, or minor depression.

Diabetes



9.5%

Excluding diabetes during pregnancy or prediabetes or borderline diabetes.

Asthma



6.8%

Respondents were defined as having asthma if they were ever told they had asthma and still have asthma.

Cancer



9.3%

Excluding all types of skin cancer

COPD



6.0%

Including chronic obstructive pulmonary disease (COPD), emphysema, or chronic bronchitis.

Skin Cancer



10.2%

Any types of skin cancer including carcinoma, melanoma and sarcoma.

Coronary Heart Disease



4.7%

Including angina or coronary heart disease. Excluding heart attack/myocardial infarction.

Northwest BT Region counties: Cheyenne, Decatur, Graham, Norton, Phillips, Rawlins, Rooks, Thomas.

Kansas Behavioral Risk Factor Surveillance System-Local Data, 2017. Kansas Department of Health and Environment, Bureau of Health Promotion website. Available at <http://www.kdheks.gov/brfss/BRFSS2017/index.html>. Accessed July 21, 2019.

Supported by grants from the Health Forward Foundation, Kansas Health Foundation, REACH Healthcare Foundation, Sunflower Foundation and the Centers for Disease Control and Prevention.

Kidney Disease



2.8%

Not including kidney stones, bladder infection or incontinence (not being able to control urine flow).

* Respondents were identified as having the chronic condition if they had ever been told by a doctor, nurse, or other health professional that they had that chronic condition.

