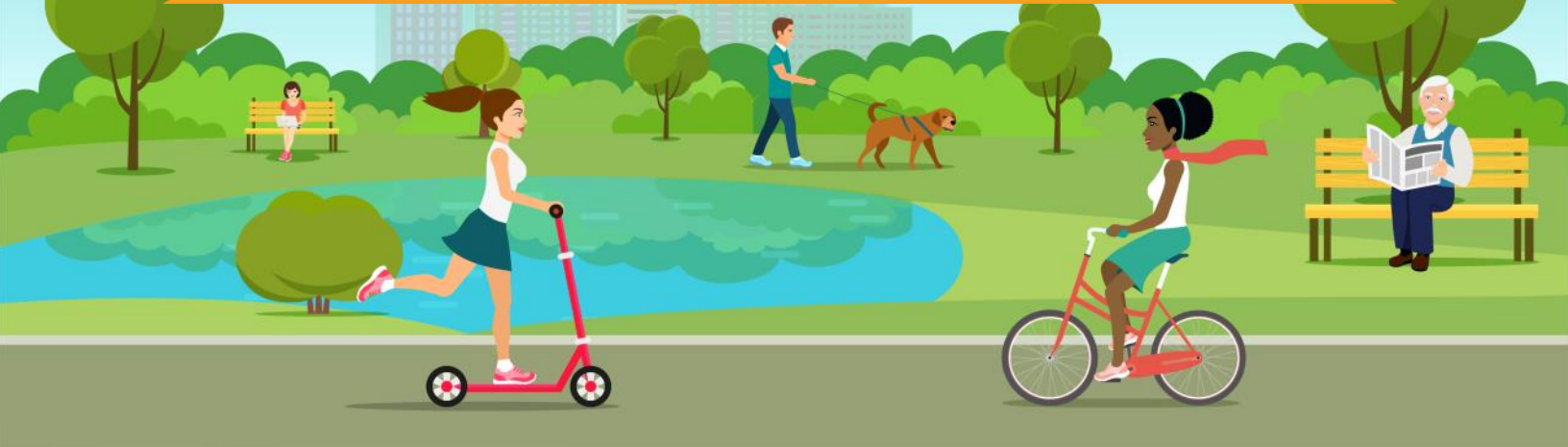


# Chronic Health Conditions Among Adults\*

Southwest Surveillance Region, 2017



## High Blood Pressure



**29.8%**

Excluding high blood pressure during pregnancy.

## Obesity



**35.6%**

Body mass index (BMI)  $\geq 30$  kg/m<sup>2</sup> determined by self-reported weight and height.

## Arthritis



**17.2%**

Including rheumatoid arthritis, gout, lupus, fibromyalgia, or some form of arthritis, excluding osteoporosis.

## Depressive Disorder



**16.4%**

Including depression, major depression, dysthymia, or minor depression.

## Diabetes



**11.5%**

Excluding diabetes during pregnancy or prediabetes or borderline diabetes.

## Asthma



**7.0%**

Respondents were defined as having asthma if they were ever told they had asthma and still have asthma.

## Cancer



**4.4%**

Excluding all types of skin cancer

## COPD



**3.5%**

Including chronic obstructive pulmonary disease (COPD), emphysema, or chronic bronchitis.

## Skin Cancer



**5.1%**

Any types of skin cancer including carcinoma, melanoma and sarcoma.

## Coronary Heart Disease



**4.8%**

Including angina or coronary heart disease. Excluding heart attack/myocardial infarction.

Southwest Surveillance Region counties: Clark, Ford, Gray, Haskell, Hodgeman, Meade.

Kansas Behavioral Risk Factor Surveillance System-Local Data, 2017. Kansas Department of Health and Environment, Bureau of Health Promotion website. Available at <http://www.kdheks.gov/brfss/BRFSS2017/index.html>. Accessed July 21, 2019.

Supported by grants from the Health Forward Foundation, Kansas Health Foundation, REACH Healthcare Foundation, Sunflower Foundation and the Centers for Disease Control and Prevention.

\* Respondents were identified as having the chronic condition if they had ever been told by a doctor, nurse, or other health professional that they had that chronic condition.

